

Molecular Gas Properties and CO-to-H₂ Conversion Factors in the Central Kiloparsec of NGC 3351

YU-HSUAN TENG ¹, KARIN M. SANDSTROM ¹, JIAYI SUN ², ADAM K. LEROY ², L. CLIFTON JOHNSON ³,
ALBERTO D. BOLATTO ^{4,5,6}, J. M. DIEDERIK KRUIJSSEN ⁷, ANDREAS SCHRUBA ⁸, ANTONIO USERO ⁹,
ASHLEY T. BARNES ¹⁰, FRANK BIGIEL ¹⁰, GUILLERMO A. BLANC ^{11,12}, BRENT GROVES ¹³, FRANK P. ISRAEL ¹⁴,
DAIZHONG LIU ⁸, ERIK ROSOLOWSKY ¹⁵, EVA SCHINNERER ¹⁶, J. D. SMITH ¹⁷ AND FABIAN WALTER ¹⁶

¹Center for Astrophysics and Space Sciences, Department of Physics, University of California San Diego,
9500 Gilman Drive, La Jolla, CA 92093, USA

²Department of Astronomy, The Ohio State University, 140 West 18th Avenue, Columbus, Ohio 43210, USA

³Center for Interdisciplinary Exploration and Research in Astrophysics (CIERA) and Department of Physics and Astronomy,
Northwestern University, 1800 Sherman Avenue, Evanston, IL 60201, USA

⁴Department of Astronomy and Joint Space-Science Institute, University of Maryland, College Park, MD 20742, USA

⁵Visiting Scholar at the Flatiron Institute, Center for Computational Astrophysics, NY 10010, USA

⁶Visiting Astronomer at the National Radio Astronomy Observatory, VA 22903, USA

⁷Astronomisches Rechen-Institut, Zentrum für Astronomie der Universität Heidelberg,
Mönchhofstraße 12-14, D-69120 Heidelberg, Germany

⁸Max-Planck-Institut für extraterrestrische Physik, Giessenbachstraße 1, D-85748 Garching, Germany

⁹Observatorio Astronómico Nacional (IGN), C/Alfonso XII, 3, E-28014 Madrid, Spain

¹⁰Argelander-Institut für Astronomie, Universität Bonn, Auf dem Hügel 71, 53121 Bonn, Germany

¹¹Observatories of the Carnegie Institution for Science, 813 Santa Barbara Street, Pasadena, CA 91101, USA

¹²Departamento de Astronomía, Universidad de Chile, Camino del Observatorio 1515, Las Condes, Chile

¹³International Centre for Radio Astronomy Research, University of Western Australia,
35 Stirling Highway, Crawley, WA 6009, Australia

¹⁴Sterrewacht Leiden, Leiden University, P.O. Box 9513, 2300 RA, Leiden, The Netherlands

¹⁵Department of Physics, University of Alberta, Edmonton, AB T6G 2E1, Canada

¹⁶Max-Planck-Institut für Astronomie, Königstuhl 17, D-69117, Heidelberg, Germany

¹⁷Department of Physics and Astronomy, University of Toledo, Ritter Obs., MS #113, Toledo, OH 43606, USA

ABSTRACT

The CO-to-H₂ conversion factor (α_{CO}) is critical to studying molecular gas and star formation in galaxies. The value of α_{CO} has been found to vary within and between galaxies, but the specific environmental conditions that cause these variations are not fully understood. Previous observations on \sim kpc scales revealed low values of α_{CO} in the centers of some barred spiral galaxies, including NGC 3351. We present new ALMA Band 3, 6, and 7 observations of ¹²CO, ¹³CO, and C¹⁸O lines on 100 pc scales in the inner \sim 2 kpc of NGC 3351. Using multi-line radiative transfer modeling and a Bayesian likelihood analysis, we infer the H₂ density, kinetic temperature, CO column density per line width, and CO isotopologue abundances on a pixel-by-pixel basis. Our modeling implies the existence of a dominant gas component with a density of $2\text{--}3 \times 10^3 \text{ cm}^{-3}$ in the central \sim 1 kpc and a high temperature of 30–60 K near the nucleus and near the contact points that connect to the bar-driven inflows. Assuming a CO/H₂ abundance of 3×10^{-4} , our analysis yields $\alpha_{\text{CO}} \sim 0.5\text{--}2.0 \text{ M}_{\odot} (\text{K km s}^{-1} \text{ pc}^2)^{-1}$ with a decreasing trend with galactocentric radius in the central \sim 1 kpc. The inflows show a substantially lower $\alpha_{\text{CO}} \lesssim 0.1 \text{ M}_{\odot} (\text{K km s}^{-1} \text{ pc}^2)^{-1}$, likely due to lower optical depths caused by turbulence or shear in the inflows. Over the whole region, this gives an intensity-weighted α_{CO} of $\sim 1.5 \text{ M}_{\odot} (\text{K km s}^{-1} \text{ pc}^2)^{-1}$, which is similar to previous dust modeling based results at kpc scales. This suggests that low α_{CO} on kpc scales in the centers of some barred galaxies may be due to the contribution of low optical depth CO emission in bar-driven inflows.

Keywords: Barred spiral galaxies (136); CO line emission (262); Molecular gas (1073); Star forming regions (1565)

1. INTRODUCTION

Stars are born in cold and dense molecular clouds that are mainly composed of molecular hydrogen, H_2 . It is therefore known that molecular clouds play an important role in star formation and galaxy evolution (see review by [Kennicutt & Evans 2012](#)). However, emission from the most abundant molecule, H_2 , is not directly observable in cold molecular gas, since its lowest energy transition has an upper energy level $E/k \approx 510$ K and can only be seen in gas with temperatures above ~ 80 K ([Togi & Smith 2016](#)). Therefore, to trace cold molecular gas, the most common approach is to observe the low- J rotational lines of the second most abundant molecule, carbon monoxide ($^{12}\text{C}^{16}\text{O}$; hereafter CO), and then apply a CO-to- H_2 conversion factor to infer the total amount of molecular gas (see review by [Bolatto et al. 2013](#)). The CO-to- H_2 conversion factor is formally defined as the ratio between H_2 column density and the integrated intensity of CO 1–0:

$$X_{\text{CO}} = \frac{N_{\text{H}_2}}{I_{\text{CO}(1-0)}} \left(\frac{\text{cm}^{-2}}{\text{K km s}^{-1}} \right). \quad (1)$$

In mass units, Equation 1 can be rewritten as

$$\alpha_{\text{CO}} = \frac{M_{\text{mol}}}{L_{\text{CO}(1-0)}} \left(\frac{M_{\odot}}{\text{K km s}^{-1} \text{ pc}^2} \right), \quad (2)$$

where M_{mol} is the total molecular mass including the contribution from Helium ($M_{\text{mol}} \sim 1.36 M_{\text{H}_2}$), and $L_{\text{CO}(1-0)}$ is the CO 1–0 luminosity. X_{CO} can be converted to α_{CO} by multiplying by a factor of 4.5×10^{19} (see Section 5 for more details).

Various methods have been used to measure the value of α_{CO} by estimating the total gas mass, including: using measured line-widths and sizes with the assumption of virial balance in giant molecular clouds (GMCs) ([Scoville et al. 1987](#); [Solomon et al. 1987](#); [Bolatto et al. 2008](#); [Donovan Meyer et al. 2013](#)); dust emission or extinction converted to gas mass with various assumptions on the dust-to-gas ratio ([Pineda et al. 2008](#); [Leroy et al. 2011](#); [Planck Collaboration et al. 2011](#); [Imara 2015](#)); γ -ray emission converted to gas mass with knowledge of the cosmic ray flux ([Abdo et al. 2010](#); [Ackermann et al. 2012a](#); [Remy et al. 2017](#)); and the use of ^{13}CO ([Cormier et al. 2018](#)), $[\text{C II}]$ ([Accurso et al. 2017](#); [Bigiel et al. 2020](#); [Madden et al. 2020](#)), or the Kennicutt-Schmidt law based on star formation rate measurements ([Schruba et al. 2012](#); [Blanc et al. 2013](#)). These studies have found a roughly constant α_{CO} value

of $\sim 4.4 M_{\odot} (\text{K km s}^{-1} \text{ pc}^2)^{-1}$ (or $X_{\text{CO}} \sim 2 \times 10^{20} \text{ cm}^{-2} (\text{K km s}^{-1})^{-1}$ in molecular clouds in the disks of the Milky Way or other nearby spiral galaxies. As a result, many studies assume a constant α_{CO} value similar to the Milky Way average. However, α_{CO} may depend on gas conditions such as density, temperature, metallicity, and velocity dispersion (e.g., [Narayanan et al. 2012](#); [Bolatto et al. 2013](#)), and the α_{CO} values could vary by orders of magnitude in different environments as predicted from hydrodynamical simulations ([Feldmann et al. 2012](#); [Gong et al. 2020](#)). For instance, a low α_{CO} value could be caused by conditions such as: (1) enhanced temperature and/or decreased density in GMCs that are virialized (e.g., [Bolatto et al. 2013](#)), (2) GMCs with increased velocity dispersion relative to mass, which alters their virial balance (e.g., [Watanabe et al. 2011](#)), or (3) CO emission from molecular gas that is not associated with GMCs (e.g., [Leroy et al. 2015](#)). On the other hand, α_{CO} can also be extremely high in low-metallicity galaxies (e.g., [Papadopoulos et al. 2018](#); [Madden et al. 2020](#)) due to envelopes of “CO-dark H_2 ” ([Wolfire et al. 2010](#)).

Studies have shown that galaxy centers tend to have lower α_{CO} , which may be due to higher temperatures and/or dynamical effects in galaxy centers (e.g., [Sandstrom et al. 2013](#); [Israel 2020](#)). The value of α_{CO} in the Galactic Center was found to be 3–10 times lower than in the Galactic disk ([Blitz et al. 1985](#); [Sodroski et al. 1995](#); [Oka et al. 2001](#); [Ackermann et al. 2012b](#)). In addition, previous kpc-scale observations also revealed substantially lower α_{CO} values than the Milky Way average in many nearby galaxy centers, especially those with nuclear gas concentrations ([Meier & Turner 2004](#); [Israel 2009](#); [Blanc et al. 2013](#); [Sandstrom et al. 2013](#); [Israel 2020](#)). As stellar bars or spiral arms funnel gas to the centers and create concentrations of gas and star formation, galaxy centers frequently host the most active star formation in disk galaxies (e.g. [Davies et al. 2007](#); [Callanan et al. 2021](#)). Feedback from starburst and active galactic nuclei (AGNs) could also lead to significantly different physical conditions in the central kpc of galaxies. In (ultra-)luminous infrared galaxies (U/LIRGs) and/or galaxy mergers, α_{CO} values were also found to be lower than those of the Milky Way clouds, with the gas usually being warmer, denser, and having higher CO isotopologue abundances ([Downes & Solomon 1998](#); [Papadopoulos et al. 2012b](#); [Sliwa et al. 2014, 2017](#); [König et al. 2016](#)). To understand molec-

ular gas and star formation in galaxies, it is critical to study the variation of α_{CO} and its relation to environmental conditions. Galaxy centers, having conditions of high gas surface density, high excitation, and/or altered molecular gas dynamics compared to the simple picture of isolated virialized GMCs, are thus ideal test beds for studying the influence of physical properties on α_{CO} .

In order to best diagnose the physical state of the molecular gas and reasons for α_{CO} variation, it is necessary to observe the optically thin isotopologues of CO. Since the low- J rotational lines of CO are optically thick in molecular clouds, this leads to a degeneracy in CO excitation and subsequently to uncertain column densities. Therefore, optically thin tracers are crucial for self-consistent measurements of excitation conditions or molecular gas column densities. One of the CO isotopologues, ^{13}CO , has CO/ ^{13}CO abundance ratios ranging from ~ 20 at the Galactic Center to ~ 70 near the solar neighborhood (Langer & Penzias 1990; Milam et al. 2005). With such a low abundance, ^{13}CO is generally optically thin in molecular clouds except for the densest regions (Tan et al. 2011; Shimajiri et al. 2014; Barnes et al. 2020). Another CO isotopologue, C^{18}O , is approximately an order of magnitude less abundant than ^{13}CO , and is therefore optically thin with only few exceptions (Wouterloot et al. 2008; Areal et al. 2018). Several studies have used the lowest- J transitions of CO isotopologues to constrain physical conditions in nearby galaxy centers at $\gtrsim \text{kpc}$ scales (Eckart et al. 1990; Israel 2009; Jiménez-Donaire et al. 2017; Israel 2020). However, it is only recently that observations of CO isotopologues on cloud-scales (~ 100 pc) have become routinely possible toward nearby galaxy centers, thanks to the high sensitivity and resolution of the Atacama Large Millimeter/submillimeter Array (ALMA). Therefore, it is now possible to obtain multiple rotational levels of optically thin CO isotopologue lines resolved in a galaxy center, which not only allows for more reliable physical results but also reveals the detailed variation of conditions in the galaxy center.

In this study, we investigate cloud-scale variation of molecular gas properties and α_{CO} using ALMA observations of CO isotopologues toward the center of NGC 3351. NGC 3351 is a barred spiral galaxy located at a distance of 9.96 ± 0.33 Mpc (Anand et al. 2021), with a (photometric) disk inclination of 45.1° and position angle of 188.4° (Lang et al. 2020). It has a total stellar mass of $2.3 \times 10^{10} M_\odot$ and a star formation rate of $1.3 M_\odot \text{ yr}^{-1}$ (Leroy et al. 2021a). Early stud-

ies have found a circumnuclear ring¹ with a diameter of $\sim 20''$ (~ 1 kpc) in the center of NGC 3351, harboring intense massive star formation activity (e.g., Alloin & Nieto 1982; Leroy et al. 2009). Previous observations in UV, $\text{H}\alpha$, $\text{Pa}\alpha$, and radio continuum also identified multiple star-forming complexes at 100 pc scales along the ring (Colina et al. 1997; Planesas et al. 1997; Hägele et al. 2007; Linden et al. 2020; Calzetti et al. 2021). The star formation rate and the stellar mass are estimated to be $\sim 0.4 M_\odot \text{ yr}^{-1}$ and $3\text{--}10 \times 10^8 M_\odot$ in the central few kpc region (Elmegreen et al. 1997; Planesas et al. 1997; Calzetti et al. 2021). In addition, recent studies that analyzed the kinematics in the center of NGC 3351 have revealed bar-driven inflows that funnel gas/dust into the ring (e.g. Leaman et al. 2019; Lang et al. 2020). Notably, there are no signs of AGN activity in the nucleus of NGC 3351 (Goulding & Alexander 2009; Grier et al. 2011; Gadotti et al. 2019), while Lin et al. (2018) showed that the nucleus may be a recent star formation site. This indicates that emission from the center of NGC 3351 is dominated by star formation. Leaman et al. (2019) also showed that stellar feedback processes may drive a nuclear outflow in NGC 3351 even without an AGN host. At an angular resolution of $\sim 40''$, Sandstrom et al. (2013) found a α_{CO} value $\sim 6\times$ lower than the standard Milky Way value in the central 1.7 kpc of NGC 3351 with an uncertainty of < 0.2 dex. This region has an oxygen abundance similar to the solar value, so the contrast cannot be explained by a metallicity difference (Moustakas et al. 2010).

In this paper, we present new ALMA observations toward the inner ~ 2 kpc of NGC 3351 with the CO isotopologues ^{12}CO , ^{13}CO , and C^{18}O in their lowest rotational transitions $J=1\text{--}0$, $2\text{--}1$, and $3\text{--}2$ at a matched angular resolution of $2.1''$ (~ 100 pc). To understand what physical processes control α_{CO} in galaxy centers, we study the distribution of environmental conditions and α_{CO} values in this region and investigate the possible causes of such variations. In Section 2, we describe the details of observations and data reduction. The resulting spectra, images and line ratios are shown in Section 3. In Section 4, we present non-local thermodynamic equilibrium (non-LTE) radiative transfer modeling and results. Section 5 shows our analysis of α_{CO} variation and its possible implications. Finally, we compare our results with other literature or observations in Section 6, and summarize our findings in Section 7.

¹ With higher resolution, it might be revealed as a tightly wound double spiral emanating from the inner region of the bar instead of a continuous ring-like structure. See Helfer & Blitz (1995) for an example in NGC 1068.

2. OBSERVATIONS AND DATA REDUCTION

2.1. ALMA Observations

We obtained ALMA Band 3, 6, and 7 observations to capture CO, ^{13}CO , and C^{18}O lines as well as millimeter continuum emission from the central ~ 2 kpc of NGC 3351 (see Table 1). These observations were designed to resolve the gas structures around the starburst ring at $1\text{--}2''$ ($\sim 50\text{--}100$ pc) resolution. In this paper, we focus on the molecular line observations and their implied gas conditions. Results of the dust continuum will be included in a future work.

Our Band 3 observation targets the CO 1–0 line and 100–115 GHz continuum. It uses the C43-3 configuration of the ALMA 12m array to reach an angular resolution of $2.1'' \times 1.3''$ for the CO line, and a single 12m pointing covered the entire central region ($\sim 30''$ in diameter). The achieved root-mean-square (rms) noise level is 0.32 K per 2.5 km s^{-1} channel (averaged across the field-of-view, out to a primary beam response threshold of 0.25). We note that Band 3 has the lowest frequency, and thus it requires a more extended array configuration to achieve an angular resolution similar to the Band 6 or 7 observations. With a more extended array configuration, the surface brightness sensitivity decreases, which leads to a higher rms level for our Band 3 data compared to the other bands for a given integration time. Although a longer integration time in Band 3 observations can reduce the noise level, the rms of 0.32 K per channel is already sufficient for secure detection of CO 1–0 over the central kpc region of NGC 3351.

Our Band 6 observation targets the $J=2\text{--}1$ transition of the ^{13}CO and C^{18}O lines as well as the 215–235 GHz continuum. With the C43-1 configuration of the ALMA 12m array, it achieves an angular resolution of $1.8'' \times 1.2''$ and uses a 7-pointing mosaic to cover the central $30'' \times 30''$ area. The achieved rms noise level is 0.036 K per 2.5 km s^{-1} channel.

Our Band 7 observation targets the $J=3\text{--}2$ transition of the ^{13}CO and C^{18}O lines and the 325–345 GHz continuum. The ALMA C40-1 configuration provides an angular resolution of $1.2'' \times 1.0''$ and a 14-pointing mosaic covers the central $30'' \times 30''$ area. The achieved rms noise level is 0.032 K per 2.5 km s^{-1} channel.

To complement these observations obtained specifically for this project, we also include the PHANGS–ALMA CO 2–1 data (Leroy et al. 2021a) in our analysis to aid the imaging and provide additional constraints on the gas temperature and isotopologue ratios. This data set was observed in Cycle 3 (project code: 2015.1.00956.S) and it reaches a similar angular resolution as the other observations used in this project. It

combines ALMA 12m, 7m, and total-power (TP) observations to ensure a complete $u\text{--}v$ coverage. The characteristics of the PHANGS–ALMA data are described in detail in Leroy et al. (2021a).

Our Band 3, 6, and 7 observations were taken with the 12m array alone and thus lack short-spacing information (see Table 1 for the largest angular structure (LAS) recoverable for each line). To estimate how much emission these 12m-only observations can recover, we perform a test with the PHANGS CO 2–1 data, which includes coverage of all $u\text{--}v$ scales with 12m and 7m arrays as well as TP observations. We imaged the 12m-only PHANGS data and the 12m+7m+TP and compared the resulting maps to check flux recovery. By dividing the 12m-only image by the combined image, we find a flux recovered ratio of $\sim 97\%$ over the entire observed region. The analyses presented in this paper include only the pixels within a flux recovered ratio of 1 ± 0.3 .

2.2. Calibration and Imaging

We calibrate the raw data with the calibration scripts provided by the observatory. We use the appropriate versions of the CASA pipeline to calibrate the Cycle 2 and Cycle 5 observations as recommended by the observatory (version 4.2.2 and 5.1.1, respectively).

We then image the CO lines and continuum separately with the CASA task `tclean` in two steps, as inspired by the PHANGS–ALMA imaging scheme (Leroy et al. 2021b). We weight the $u\text{--}v$ data according to the “Briggs” scheme with a robustness parameter $r = 0.5$, which offers a good compromise between noise and resolution. We first perform a shallow, multi-scale cleaning to pick up both compact and extended emission down to a signal-to-noise (S/N) ratio of 3 throughout the entire field of view. After that, we perform a deep, single-scale cleaning to capture all remaining emission down to $\text{S/N} \sim 1$. This second step is restricted to within a cleaning mask, which is constructed based on the presence of significant CO 2–1 detection in the PHANGS–ALMA data. This way, the deep cleaning process can efficiently recover most remaining signals at their expected position-position-velocity (*ppv*) locations.

These calibration and imaging procedures produce high-quality data cubes for the CO lines as well as 2D images for the continuum emission.

2.3. Product Creation and Error Estimation

From the CO line data cubes, we derive 2D maps of integrated line intensity (moment 0), intensity-weighted velocity (moment 1), and velocity dispersion estimated using the effective line width estimator, as well as their

Table 1. ALMA Observations

Line	Project Code	Rest Frequency (GHz)	n_{crit} at 20 K (cm^{-3})	Array	Beam Size ($''$)	LAS ($''$)	rms per channel ($\text{K (2.5 km s}^{-1}\text{)}^{-1}$)
CO J=1–0	(1)	115.27	2.2×10^3	12m	2.1	11.9	0.320
CO J=2–1	(2)	230.54	1.1×10^4	12m+7m+TP	1.5	–	0.108
^{13}CO J=2–1	(1)	220.40	9.4×10^3	12m	1.8	10.4	0.036
^{13}CO J=3–2	(3)	330.59	3.1×10^4	12m	1.2	7.6	0.032
C^{18}O J=2–1	(1)	219.56	9.3×10^3	12m	1.8	10.4	0.036
C^{18}O J=3–2	(3)	329.33	3.1×10^4	12m	1.2	7.6	0.032

NOTE—ALMA project codes: (1) 2013.1.00885.S, (2) 2015.1.00956.S, (3) 2016.1.00972.S. Critical densities (n_{crit}) are calculated from the Einstein-A and collisional rate coefficients provided by the Leiden Atomic Molecular Database (Schöier et al. 2005). In optically thick cases with $\tau_0 = 5$, n_{crit} of CO 1–0 and 2–1 at 20 K decrease to 6.1×10^2 and $3.1 \times 10^3 \text{ cm}^{-3}$, respectively (see Shirley 2015). The rms of CO 1–0 is higher due to it being observed in a more extended array configuration, which has lower surface brightness sensitivity.

associated uncertainties. We describe our methodology here, and note that it is very similar to that adopted in the PHANGS–ALMA pipeline (Leroy et al. 2021b, also see Sun et al. 2018).

First, we convolve all data cubes to the finest possible round beam ($\text{FWHM} = 2.1''$; set by the CO 1–0 resolution) to ensure that all CO line data probe the same spatial scale. Second, we estimate the local rms noise in the data cubes by iteratively rejecting CO line detection and calculating the median absolute deviation (MAD) for the signal-free ppv pixels. Third, we create a signal mask for each data cube by finding all ppv positions with $\text{S/N} > 5$ detection in more than two consecutive channels, and then expanding this signal mask to include all morphologically connected ppv positions with $\text{S/N} > 2$ detection in more than two consecutive channels. Fourth, we combine the signal masks for all CO lines in “union” (i.e., logical OR) to generate a master signal mask. Fifth, we collapse all CO line data cubes within this master signal mask to create moment maps, and calculate the associated uncertainties based on Gaussian error propagation. Finally, we regrid all the data products such that the new grid Nyquist-samples the beam (i.e., grid spacing equals half of the beam FWHM).

This product creation scheme yields a coherent set of moment maps and uncertainty maps for all the CO lines, which have matched resolution and consistently cover the same ppv footprint.

3. RESULTS

Figure 1 shows the moment 0 maps of the observed CO lines. In these images, we blank pixels with $\text{S/N} < 3$ in moment 0, except for the two C^{18}O images where pixels with $\text{S/N} < 1$ are blanked. All six images resolve the circumnuclear star-forming ring structure and

a gap between the ring and the nucleus. The images also reveal two spiral arm-like structures, which are gas inflows driven by the bar (also see Leaman et al. 2019; Lang et al. 2020). Note that the pixels in the central $\sim 20''$ region have $\text{S/N} > 3$ even in the C^{18}O images, but a $\text{S/N} > 1$ cutoff in C^{18}O further reveals parts of the inflow arms. We will show that constraints from the C^{18}O lines are not critical to our results for the arms (Section 5.2), so we do not exclude pixels from the analysis based on $< 3\sigma$ detection in C^{18}O lines. The moment 1 map in Figure 2a shows blue-shifted spectra in the northern half of the galaxy and red-shifted spectra in the southern half, indicating a counterclockwise gas rotation along the ring. Figure 2b shows the effective line widths² of CO 2–1. The rotation also causes a large line width around the nucleus, likely due to strong, unresolved gas motions within the central beam. As marked up in Figure 1a, the two “contact points” connecting the ring and the inflows have the brightest emission in all the lines.

Using the six moment 0 maps in units of K km s^{-1} , we generate seven line ratio maps as shown in Figure 3: the primarily temperature sensitive line ratios are presented in the top row (a–c) as CO 2–1/1–0, ^{13}CO 3–2/2–1, and C^{18}O 3–2/2–1; the following rows (d–g) show CO/ ^{13}CO 2–1, CO/ C^{18}O 2–1, $^{13}\text{CO}/\text{C}^{18}\text{O}$ 2–1, and $^{13}\text{CO}/\text{C}^{18}\text{O}$ 3–2, which are primarily sensitive to isotopologue abundance ratios and/or optical depths. There are notable variations in the line ratios throughout the map. The main trends appear to be in-

² The effective line width is defined as $\Sigma I / (\sqrt{2\pi} T_{\text{peak}})$, where ΣI is the integrated line intensity and T_{peak} is the line peak temperature in K. It is referred to as “equivalent width” in Heyer et al. (2001) and subsequent works. Sun et al. (2018, 2020) also introduced this quantity in detail.

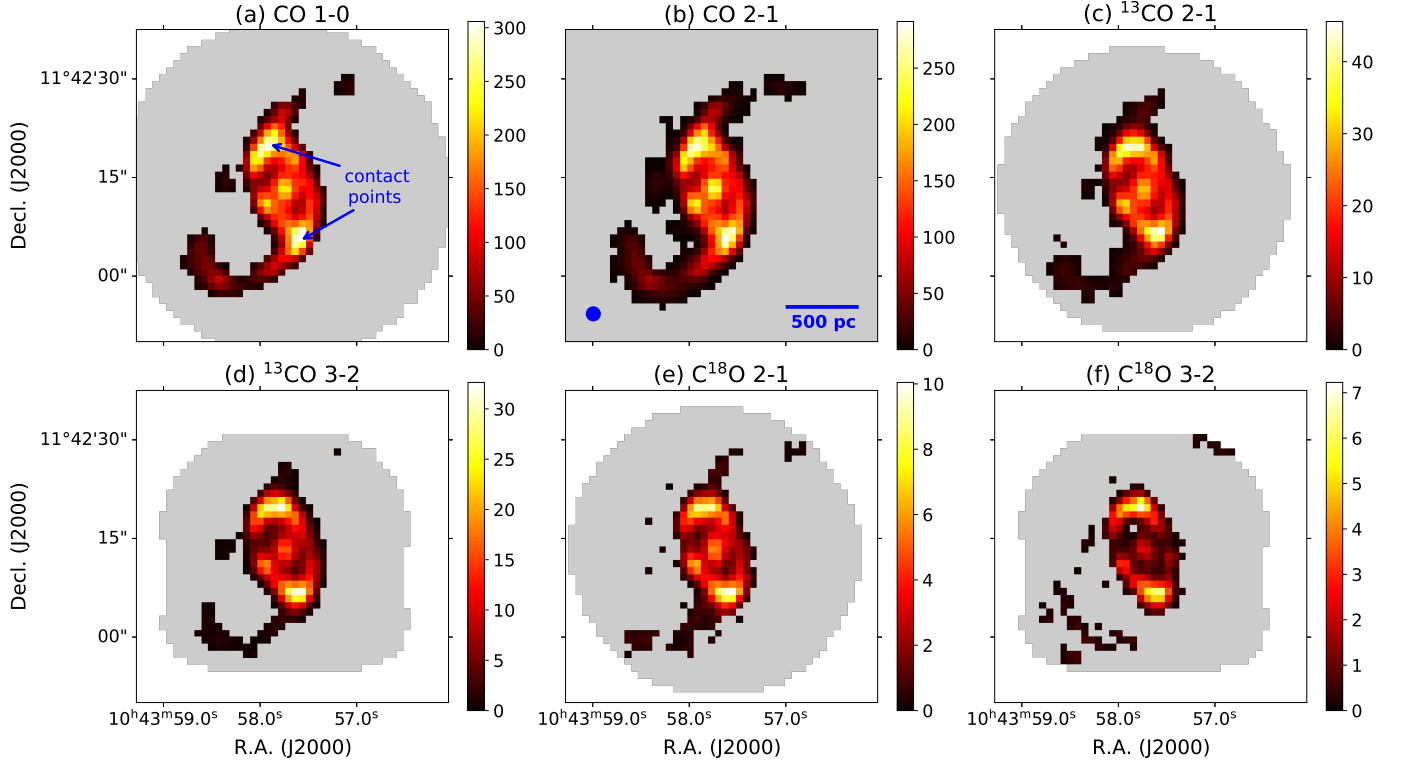


Figure 1. Integrated intensity maps of several CO isotopologues and rotational transitions (in units of K km s^{-1}). The matched beam size of $2.1''$ and a scale bar of 500 pc is shown in panel (b). The white areas lie outside the field of view of ALMA observations, while the gray areas show the pixels without confident detection (i.e. $< 3\sigma$ for ^{12}CO and ^{13}CO and $< 1\sigma$ for C^{18}O). These images resolve a circumnuclear star-forming ring with $\sim 20''$ or 1 kpc in diameter, a gap between the ring and the nucleus, and two bar-driven inflows connected to the “contact points” at the northern and southern parts of the ring.

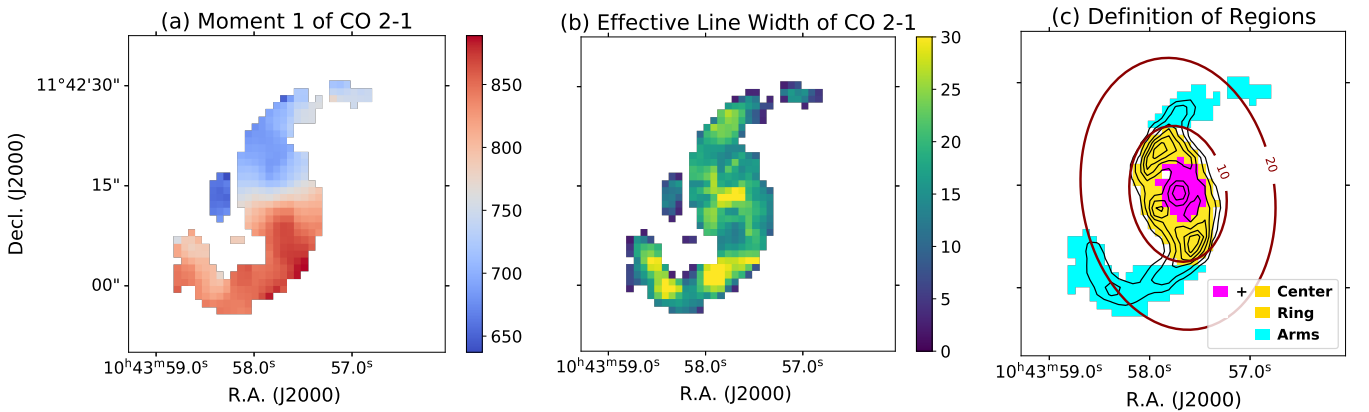


Figure 2. (a) Intensity-weighted velocity (moment 1) and (b) effective line width of CO 2–1, both in units of km s^{-1} . The moment 1 shows a clear sign of counterclockwise gas rotation, and the line widths are broader at the nucleus and along the arms. (c) Definition of the center, ring, and arm regions, overlaid with contour levels of the CO 2–1 integrated intensity at $I_{\text{CO}(2-1)} = 20, 50, 100, 150, 200, 250 \text{ K km s}^{-1}$ and the galactocentric radius at $10''$ and $20''$, respectively. We will present various regional statistics based on these defined regions.

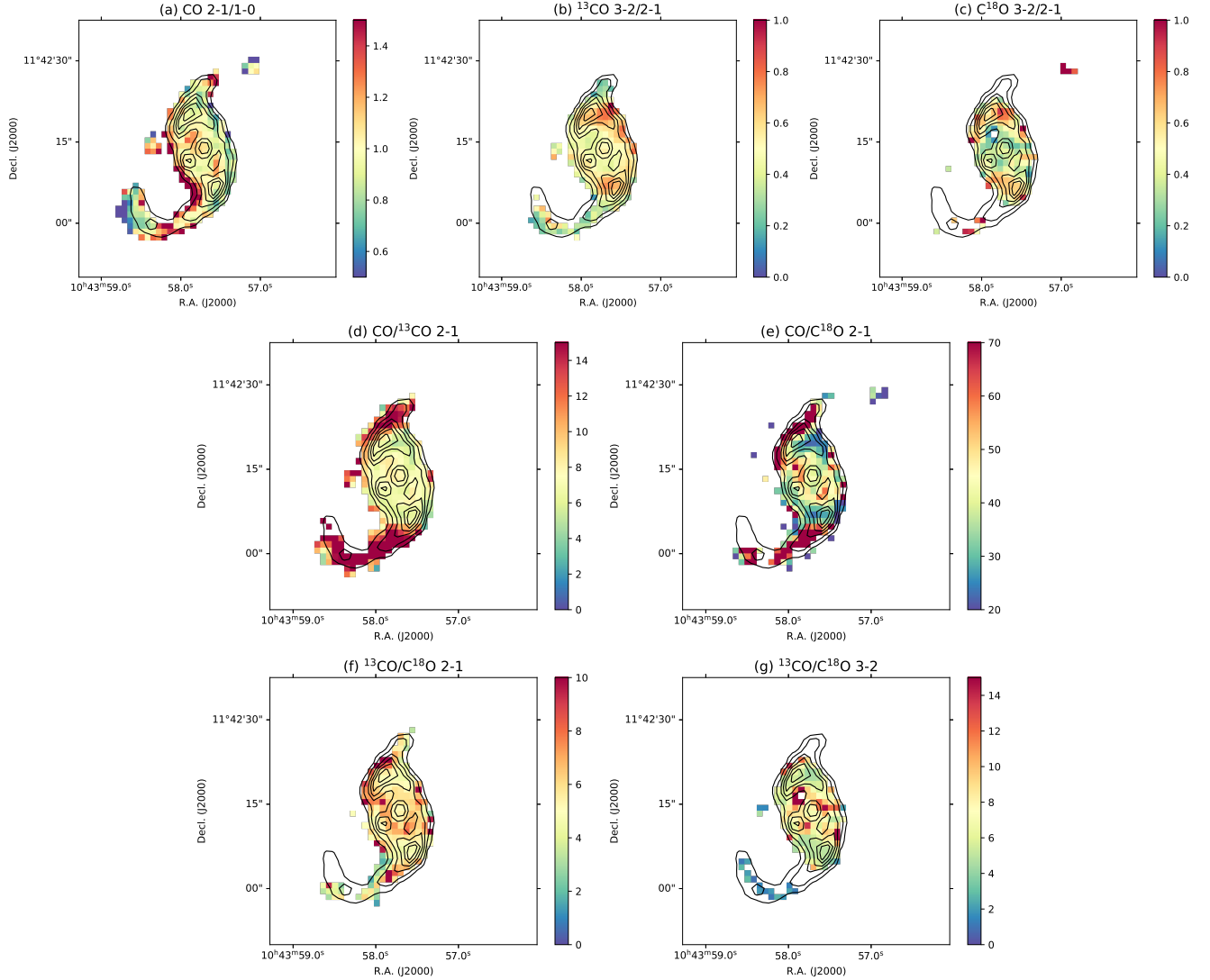


Figure 3. Line ratio maps. A 3σ mask in both relevant lines is applied to each panel, except for the C^{18}O lines where a 1σ cutoff is applied. Contour levels of the CO 2–1 emission are the same as in Figure 2c. (a)–(c) show the primarily temperature-sensitive line ratios, and (d)–(g) show the line ratios primarily sensitive to isotopologue abundances or optical depths. The CO 2–1/1–0 ratio of ~ 1 suggests optically thick and thermalized emission in this region. Notably, the arm regions show significantly higher CO/ ^{13}CO and CO/ C^{18}O line ratios than the center.

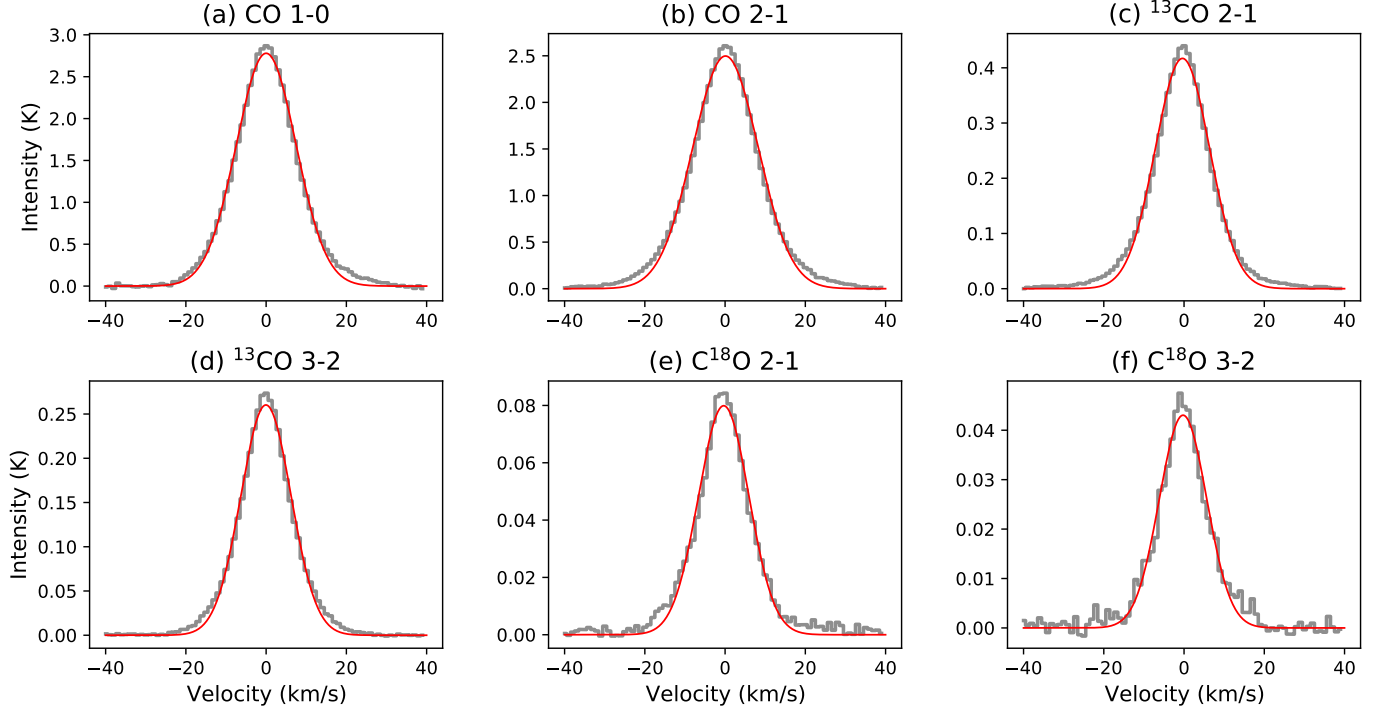


Figure 4. Shifted and stacked spectra over the center region, overlaid with the best-fit Gaussian profiles. All six lines show a single-peaked spectrum that can be well-described by a Gaussian function. The ring region also shows similar spectra, except having a slightly higher peak temperature and a ~ 1 km s $^{-1}$ narrower line width. The averaged spectra for the arms region is presented in Figure 12.

Table 2. Regional Line Ratios in NGC 3351.

Region		CO $\frac{2-1}{1-0}$	^{13}CO $\frac{3-2}{2-1}$	C^{18}O $\frac{3-2}{2-1}$	$\frac{\text{CO}}{^{13}\text{CO}}$ 2-1	$\frac{\text{CO}}{\text{C}^{18}\text{O}}$ 2-1	$\frac{^{13}\text{CO}}{\text{C}^{18}\text{O}}$ 2-1	$\frac{^{13}\text{CO}}{\text{C}^{18}\text{O}}$ 3-2
Whole	Median	0.99	0.51	0.47	7.99	42.86	5.69	6.48
	Mean	1.03	0.50	0.51	10.67	53.63	5.92	7.08
	Std. Dev.	0.31	0.14	0.23	5.67	38.56	2.10	3.63
	Integrated Mean	1.01	0.55	0.50	8.06	45.68	5.67	6.22
Center	Median	0.99	0.54	0.46	7.02	41.10	5.75	6.89
	Mean	1.01	0.55	0.48	7.38	46.21	6.06	7.75
	Std. Dev.	0.21	0.10	0.18	1.86	23.45	1.51	3.30
	Integrated Mean	0.98	0.57	0.51	7.11	39.41	5.54	6.25
Ring	Median	0.99	0.56	0.52	7.01	40.33	5.57	6.37
	Mean	1.01	0.57	0.52	7.49	47.24	6.04	7.27
	Std. Dev.	0.23	0.10	0.18	2.10	26.91	1.69	3.11
	Integrated Mean	0.98	0.60	0.55	7.13	38.65	5.42	5.86
Arms	Median	0.98	0.33	0.87	15.67	60.25	4.53	1.92
	Mean	1.00	0.35	0.88	16.71	69.36	5.11	1.84
	Std. Dev.	0.33	0.14	0.38	6.05	49.30	2.17	0.60
	Integrated Mean	1.06	0.25	0.52	20.21	141.97	7.02	3.33

NOTE—Line ratios are calculated using the moment 0 maps in units of K km s $^{-1}$. The integrated means are calculated by first averaging the integrated intensities in each region and then dividing to obtain the ratios, while the mean, median and standard deviation are for the individual pixels of the map. Due to poor detection of C^{18}O 3-2 in the arms, the statistics for C^{18}O 3-2/2-1 and $^{13}\text{CO}/\text{C}^{18}\text{O}$ 3-2 in the arms are only based on a few pixels.

creased ^{13}CO 3–2/2–1 and C^{18}O 3–2/2–1 in regions of the star-forming ring, potentially revealing higher temperatures, though it is interesting to note that these trends are not mirrored in CO 2–1/1–0 likely due to the emission being optically thick and thermalized. In addition, the west side of the northern contact point near (R.A., Decl.) = ($10^{\text{h}}43^{\text{m}}57^{\text{s}}.7$, $11^{\circ}42'20''$) shows enhanced ratios in 3–2/2–1 of ^{13}CO and C^{18}O , which may imply a change in excitation conditions. The region also has lower ratios in the $\text{CO}/^{13}\text{CO}$ and $\text{CO}/\text{C}^{18}\text{O}$ 2–1 maps due to fainter emission in CO lines. There is a clear trend for both $\text{CO}/^{13}\text{CO}$ and $\text{CO}/\text{C}^{18}\text{O}$ 2–1 to increase in the arms, possibly indicating a significant change of abundance ratios or optical depths. As star formation occurs only in the ring/nucleus but not the inflows, enrichment of ^{13}C or ^{18}O could lower the $\text{CO}/^{13}\text{CO}$ or $\text{CO}/\text{C}^{18}\text{O}$ abundances and thus lower the $\text{CO}/^{13}\text{CO}$ and $\text{CO}/\text{C}^{18}\text{O}$ line ratios in the ring/nucleus. On the other hand, the enhanced velocity dispersion in the arms as shown in Figure 2b may also lower the optical depths, leading to more escape CO emission and higher $\text{CO}/^{13}\text{CO}$ and $\text{CO}/\text{C}^{18}\text{O}$ line ratios in the arms. Note that higher line ratios are not observed in the nucleus where the effective line widths are also broader, which is likely due to beam smearing effects. More details will be discussed in Section 5.2.

We define three regions for our analysis: the center, ring, and arms. Figure 2c illustrates the definition of these regions. The center is defined as the central $20''$ or ~ 1 kpc (in galactocentric diameter) where $\text{S/N} > 3$ in the moment 0 maps of all six lines. The ring region shares the same outer edge as the center, but excludes the inner $9''$ or ~ 450 pc region of the center. The arms region includes only the pixels outside a $20''$ diameter but excludes the “blob” that lies to the east of the center. Figure 4 shows the averaged spectra over the center region, where we applied the stacking approach by Schrubba et al. (2011) and used the moment 1 of CO 2–1 as velocity centroids. The shapes of the averaged spectra over the ring are almost identical to the center, while they show slightly higher peak intensities and $\sim 1 \text{ km s}^{-1}$ narrower line widths. This is because the ring region excludes the emission-faint “gap” region and the nucleus which has high velocity dispersion. The spectra of the arms are presented and analyzed in Section 5.2.

Table 2 lists the line ratios averaged over the whole map and for the center, ring, and arm regions separately. The means, medians and standard deviations are calculated with the ensemble of line ratio in each pixel, and we also present the integrated means where the line fluxes are first summed up in each region to calculate the ratios. We note that due to poor detection

Table 3. Model Grid Parameters

Parameter	Range	Step Size
One-Component Models		
$\log(n_{\text{H}_2} [\text{cm}^{-3}])$	2.0–5.0	0.2 dex
$\log(T_{\text{k}} [\text{K}])$	1.0–2.3	0.1 dex
$\log(N_{\text{CO}} [\text{cm}^{-2}])$	16.0–21.0	0.2 dex
$X_{12/13}$	10–200	10
$X_{13/18}$	2–20	1.5
Φ_{bf}	0.05–1.0	0.05
$\Delta v [\text{km s}^{-1}]$	15.0	–
Two-Component Models		
$\log(n_{\text{H}_2} [\text{cm}^{-3}])$	2.0–5.0	0.25 dex
$\log(T_{\text{k}} [\text{K}])$	1.0–2.0	0.1 dex
$\log(N_{\text{CO}} [\text{cm}^{-2}])$	16.0–19.0	0.25 dex
$\log(\Phi_{\text{bf}})$	–1.3... – 0.1	0.1
$X_{12/13}$	25	–
$X_{13/18}$	8	–
$\Delta v [\text{km s}^{-1}]$	15.0	–

of C^{18}O in the arms, the averaged C^{18}O 3–2/2–1 ratio of the arms is based on only few pixels. As shown in Table 2, the CO 2–1/1–0 ratio is ~ 1.0 in all regions, which would indicate optically thick, thermalized emission. The $\text{CO}/^{13}\text{CO}$ and $\text{CO}/\text{C}^{18}\text{O}$ ratios vary the most from the center/ring to the arms. Also, the ^{13}CO 3–2/2–1 ratio is lower in the arms compared to the rest, which may indicate changes in temperature or density. As these line ratio variations may imply variations in environmental conditions, we investigate the spatial distribution of multiple physical parameters through joint analysis of all the observed lines using non-LTE radiative transfer modeling and Bayesian likelihood analyses in Section 4.

4. MULTI-LINE MODELING

4.1. Modeling Setup

We use the non-LTE radiative transfer code RADEX (van der Tak et al. 2007) to model the observed line intensities under various combinations of H_2 density (n_{H_2}), kinetic temperature (T_{k}), CO column density per line width ($N_{\text{CO}}/\Delta v$), $\text{CO}/^{13}\text{CO}$ ($X_{12/13}$) and $^{13}\text{CO}/\text{C}^{18}\text{O}$ ($X_{13/18}$) abundance ratios, and the beam-filling factor (Φ_{bf}). The beam-filling factor is a fractional area of the beam covered by the emitting gas, and thus it should be ≤ 1 . Tests of the recoverability of model parameters with RADEX fitting have shown that modeling the isotopologue abundance ratio as a free parameter leads to more accurate results than assuming a fixed ratio (Tunnard & Greve 2016). With six measured lines, we construct two different models with a one-component

or two-component assumption on gas phases. The setup for these models are described separately in Section 4.2 and 4.3.

The input to RADEX includes a molecular data file specifying the energy levels, statistical weights, Einstein A-coefficients, and collisional rate coefficients of each specific molecule. The data files we use for CO, ^{13}CO , and C^{18}O are from the Leiden Atomic and Molecular Database (Schöier et al. 2005) with collisional rate coefficients taken from Yang et al. (2010). To run RADEX, we directly input the T_k , n_{H_2} , molecular species column density (N), and line width (Δv). The input T_k and n_{H_2} are used to set collisional excitation, while N and Δv are the radiative transfer parameters that determine the optical depth and escape probability for the modeled molecular emission line.

RADEX assumes a homogeneous medium and uses radiative transfer equations based on the escape probability formalism (Sobolev 1960) to find a converged solution for the excitation and radiation field. Initially, RADEX guesses the population of each energy level under LTE assumption and then computes for each transition the resultant optical depth at the line center (τ_0) by

$$\tau_0 = \frac{A_{ij}}{8\pi\tilde{\nu}^3} \frac{N}{\Delta v} \left(x_j \frac{g_i}{g_j} - x_i \right), \quad (3)$$

where A_{ij} is the Einstein A-coefficient, $\tilde{\nu}$ is the wave number, and x_i and g_i are the fractional population and statistical weight, respectively, in level i . The optical depth then determines the escape probability (β) for a uniform sphere:

$$\beta = \frac{1.5}{\tau} \left[1 - \frac{2}{\tau^2} + \left(\frac{2}{\tau} + \frac{2}{\tau^2} \right) e^{-\tau} \right], \quad (4)$$

which estimates the fraction of photons that can escape the cloud (Osterbrock & Ferland 2006). This directly constrains the radiation field, and thus a new estimation of level population and excitation temperature, leading to new optical depth values. This procedure is done iteratively until convergence is reached.

We first run RADEX with CO to build up a 3D grid with varying $N_{\text{CO}}/\Delta v$, n_{H_2} , and T_k . To construct a model grid with $X_{12/13}$ and $X_{13/18}$ axes, we calculate the column densities of ^{13}CO and C^{18}O that correspond to each varying $N_{\text{CO}}/\Delta v$ and abundance ratios, and then re-run RADEX with the calculated $N_{13\text{CO}}/\Delta v$ and $N_{\text{C}^{18}\text{O}}/\Delta v$ values. The RADEX output of the three molecules predicts a Rayleigh–Jeans equivalent temperature (T_{RJ}) for each line under the varied parameters. Assuming a Gaussian profile, the predicted line fluxes can then be estimated using a Gaussian integral:

$$\int T_{\text{RJ}} dv = \frac{\sqrt{\pi}}{2\sqrt{\ln 2}} T_{\text{RJ}} \Delta v, \quad (5)$$

where Δv is the FWHM line width. Finally, we expand the grid with an additional axis of beam-filling factor (Φ_{bf}) by multiplying the predicted line integrated intensities with the varying Φ_{bf} . This assumes the same beam-filling factor among all six emission lines. Note that since we are essentially fitting $N_{\text{CO}}/\Delta v$ with RADEX (see Equation 3), the estimation of N_{CO} would vary with line widths in different regions. Thus, when N_{CO} values are needed in further analyses, we multiply $N_{\text{CO}}/\Delta v$ with the observed CO 1–0 line width for each pixel. This assumes all six lines to have the same line width, which is consistent with our assumption of single-component gas in Section 4.2. We have checked that adopting the CO 2–1 line width also results in similar N_{CO} , as the line widths of 1–0 and 2–1 agree to within 50%. The high-S/N emission in ^{13}CO also yields similar line widths to those from the low-J CO emission - e.g., the mean CO 1–0/ ^{13}CO 2–1 line width ratio is 1.07 ± 0.21 . We do not consider the low-S/N pixels because the line widths are very uncertain at low S/N and therefore do not provide a strong constraint.

To evaluate the goodness of fit for each parameter set $\theta = (n_{\text{H}_2}, T_k, N_{\text{CO}}/\Delta v, X_{12/13}, X_{13/18}, \Phi_{\text{bf}})$, we compute the χ^2 values at each point in the model grid:

$$\chi^2(\theta) = \sum_{i=1}^n \frac{[S_i^{\text{mod}}(\theta) - S_i^{\text{obs}}]^2}{\sigma_i^2}, \quad (6)$$

where S^{mod} and S^{obs} are the modeled and observed line integrated intensities with uncertainty σ_i , and $n = 6$ since we consider six lines. To include both the measurement and calibration uncertainties, σ_i can be written as $\sigma_i^2 = \sigma_{\text{noise}, i}^2 + \sigma_{\text{cal}}^2$, where $\sigma_{\text{noise}, i}$ is simply the measurement uncertainty of the i th observed line intensity and σ_{cal} represents the calibration uncertainty. For ALMA Band 3, 6, and 7 observations, a flux calibration uncertainty of $\gtrsim 5\%$ is suggested for point sources (Bonato et al. 2018, 2019), and an additional few percent should be added for extended sources (e.g., Tunnard & Greve 2016; Leroy et al. 2021b). Thus, we adopt a 10% calibration uncertainty (i.e., $\sigma_{\text{cal}} = 0.1 \times \text{flux}$) for each line and assume independent calibrations. Although there should exist correlations between the calibration uncertainties for lines observed in the same spectral setup with the same calibrator, assuming independent calibrations is a less stringent constraint and therefore more conservative for the modeling.

The best-fit parameter set can be determined by selecting the combination with the lowest χ^2 value. By assuming a multivariate Gaussian probability distribution, the χ^2 value for each parameter set can be converted to

the probability as

$$P(S^{\text{obs}}|\theta) = \frac{1}{Q} \exp \left[-\frac{1}{2} \chi^2(\theta) \right], \quad (7)$$

where $Q^2 = \Pi_i (2\pi\sigma_i)$. We calculate this probability for each grid point in the model parameter space, and we make our grid space wide enough to cover all grid points with reasonably high likelihood. Next, we generate the marginalized 1D or 2D likelihood distributions for any given parameter(s) by summing the joint probability distribution over the full range of all other parameters except the one(s) of interest. With such marginalized 1D likelihood distributions, we find the “1DMax” solutions that give the highest 1D likelihood in each parameter. We also determine the 50th percentile values (i.e., medians) of the cumulative 1D likelihoods and compare them with the 1DMax values to better understand the probability distributions. This procedure of computing the χ^2 values and the likelihood distributions is applied to every pixel of the galaxy image in order to generate maps of the galaxy showing the derived physical parameters. In Sections 4.2 and 4.3, we present these results based on a one-component model with six free parameters and a two-component model with eight free parameters, respectively. For reproducibility, we release all the source code and parameters in a GitHub repository³.

4.2. One-Component Models

Assuming that the gas along each line of sight is uniform and that the emission can be described by a single physical condition (n_{H_2} , T_{k} , $N_{\text{CO}}/\Delta v$, $X_{12/13}$, $X_{13/18}$) with an identical filling factor Φ_{bf} across all lines, we create intensity model grids for each observed transition. As listed in Table 3, the model can be represented by a six-dimensional grid with $\log(n_{\text{H}_2} [\text{cm}^{-3}])$ varied from 2 to 5 in steps of 0.2 dex, T_{k} from 10 to 200 K in steps of 0.1 dex, $N_{\text{CO}}/\Delta v$ from $10^{16}/15$ to $10^{21}/15 \text{ cm}^{-2} (\text{km s}^{-1})^{-1}$ in steps of 0.2 dex, $X_{12/13}$ from 10 to 200 in steps of 10, $X_{13/18}$ from 2 to 20 in steps of 1.5, and Φ_{bf} from 0.05 to 1 in steps of 0.05. The range of $N_{\text{CO}}/\Delta v$ covers reasonable N_{H_2} ranges of $\sim 10^{20} - 10^{25} \text{ cm}^{-2}$ with typical CO/H₂ abundance ratios of $\sim 10^{-4}$, and all the parameter ranges were optimized from representative pixels such that the shapes of the 1D likelihood distributions are well-covered for typical bright and faint regions in the galaxy.

We apply a prior on the path length of the molecular gas along the line of sight. The idea of applying priors on line-of-sight lengths to avoid unrealistic solutions was

also adopted in Kamenetzky et al. (2014) and is supported by Tunnard & Greve (2016). The line-of-sight path length is calculated by $\ell_{\text{los}} = N_{\text{CO}}(\sqrt{\Phi_{\text{bf}}} n_{\text{CO}})^{-1}$, where $n_{\text{CO}} = n_{\text{H}_2} x_{\text{CO}}$ and x_{CO} is the CO/H₂ abundance ratio which we assume a typical value of 3×10^{-4} for starburst regions (Lacy et al. 1994; Ward et al. 2003; Sliwa et al. 2014). The $\sqrt{\Phi_{\text{bf}}}$ factor can be interpreted as the one-dimensional filling factor along the line of sight to match the area filling factor Φ_{bf} , and the same equation was also adopted by Ward et al. (2003) and Kamenetzky et al. (2012, 2014). With an angular resolution of ~ 100 pc, we require all parameter sets in our model grids to have line-of-sight path length $\ell_{\text{los}} \leq 100$ pc. The 100 pc path length is also consistent with the vertical height (thickness) of CO observed in the central few kpc of Milky Way and other nearby edge-on galaxies (Yim et al. 2014; Heyer & Dame 2015). We have checked that relaxing the constraint to 200 pc results in similar best-fit and 1DMax solutions, and thus the result is not sensitive to factor of ~ 2 changes in the line-of-sight constraint. The change in the gas thickness along the line of sight due to galaxy inclination would not alter the results. We note that all the parameters for calculating ℓ_{los} are the varied inputs of our model except for the constant x_{CO} and the observed line width to obtain N_{CO} from $N_{\text{CO}}/\Delta v$. In other words, we adopt $\ell_{\text{los}} < 100$ pc as a prior by setting a zero probability to all the parameter sets that violate this constraint, and then investigate the resultant likelihood distributions. This prior generally rules out solutions with $N_{\text{CO}} \gtrsim 10^{19} \text{ cm}^{-2}$ or $n_{\text{H}_2} \lesssim 3 \times 10^2 \text{ cm}^{-3}$, as either a high column density or a low volume density would lead to large ℓ_{los} . We also find that the primary effect of allowing larger path lengths would be to shift the solutions to higher N_{CO} while n_{H_2} and T_{k} stay roughly constant, and we do not think that such large N_{CO} values and path lengths are reasonable solutions.

Figures 5 and 6 are two corner plots (Foreman-Mackey 2016) showing the marginalized likelihood distributions of a bright pixel at (R.A., Decl.) = ($10^{\text{h}}43^{\text{m}}57^{\text{s}}.9, 11^{\circ}42'19''.5$) in the northern contact point and a faint pixel at ($10^{\text{h}}43^{\text{m}}57^{\text{s}}.8, 11^{\circ}42'15''.5$) in the gap region between the ring and the nucleus. The 1D likelihoods of N_{CO} , T_{k} , n_{H_2} , and $X_{13/18}$ are well-constrained in both pixels. On the other hand, $X_{12/13}$ is loosely constrained compared to other parameters, and the peaks in both 1D likelihoods (i.e. 1DMax, indicated by the dashed lines) are consistently at a lower $X_{12/13}$ of $\sim 20 - 30$. This leads to a deviation between the 1DMax solutions and the medians (median $X_{12/13} \sim 90 - 100$, indicated by the dotted lines). Even though the 1D likelihoods of $X_{12/13}$ along each sight line may be less-

³ <https://github.com/ElthaTeng/multiline-ngc3351>

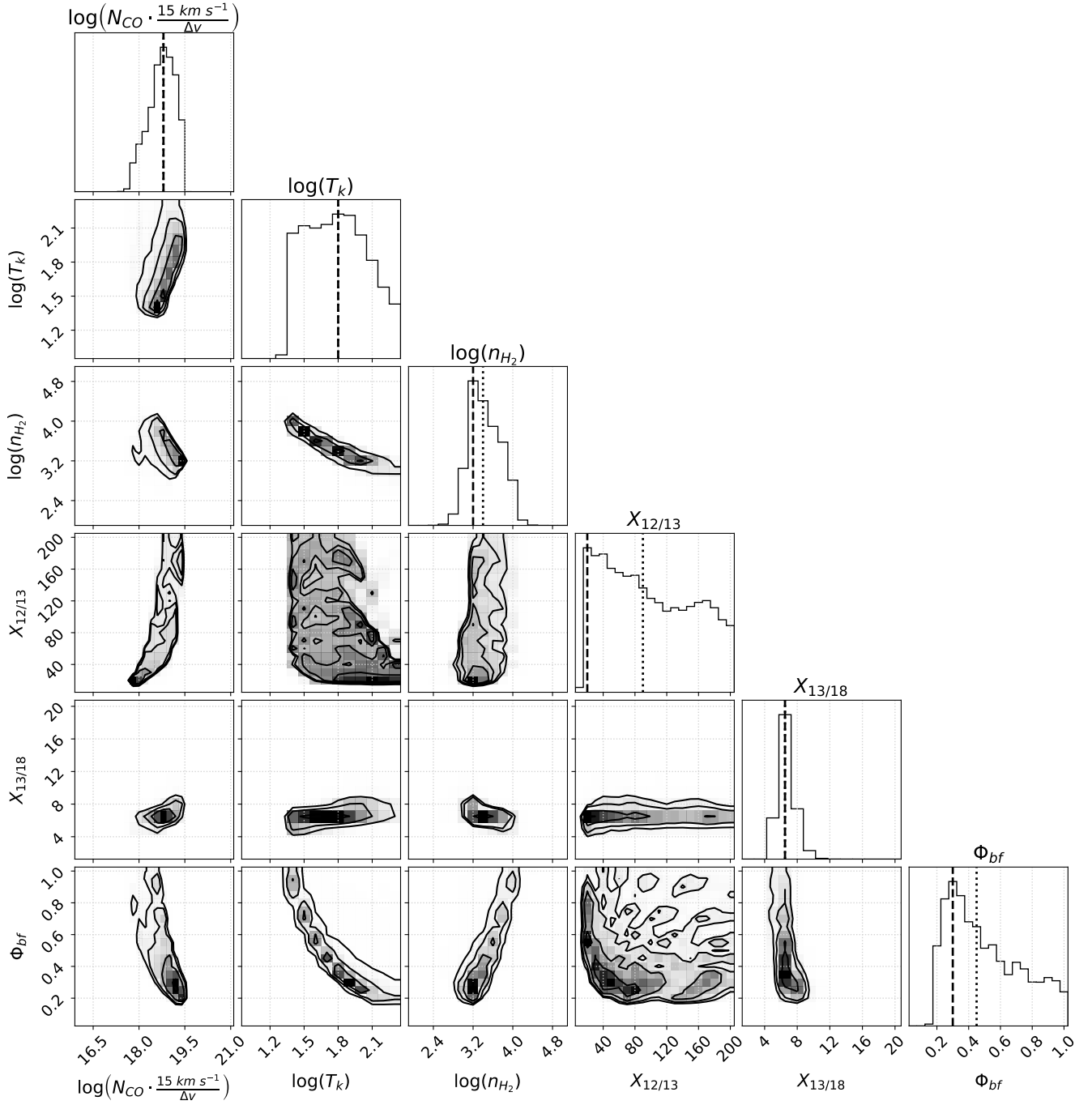


Figure 5. Marginalized 1D and 2D likelihood distributions of a bright pixel at (R.A., Decl.) = ($10^{\text{h}}43^{\text{m}}57^{\text{s}}.9$, $11^{\circ}42'19''.5$) in the northern contact point. The dashed lines on the 1D likelihood plots (in diagonal) represent the “1DMax” values that correspond to the peaks of each 1D likelihood. The dotted lines show the medians of the cumulative probability density function. For a less-constrained parameter like $X_{12/13}$, the median (~ 90) can substantially deviate from the 1DMax value (~ 20). However, the 1DMax solutions of $X_{12/13}$ are found to be consistent over the central ~ 1 kpc region, as shown in Figure 8.

Table 4. 1DMax Solutions from One-Component Modeling

Region		$\log \left(N_{\text{CO}} \frac{15 \text{ km s}^{-1}}{\Delta v} \right)$ (cm^{-2})	$\log T_{\text{k}}$ (K)	$\log n_{\text{H}_2}$ (cm^{-3})	$X_{12/13}$	$X_{13/18}$	Φ_{bf}
Whole	Median	17.8	1.2	3.2	30	8.0	0.20
	Mean	17.46	1.35	3.46	51.46	10.43	0.23
	Std. Dev.	1.13	0.41	0.76	58.31	6.48	0.19
Center	Median	18.4	1.3	3.2	20	6.5	0.25
	Mean	18.30	1.34	3.33	22.42	7.38	0.26
	Std. Dev.	0.59	0.22	0.40	14.64	1.66	0.16
Ring	Median	18.4	1.3	3.2	20	6.5	0.20
	Mean	18.21	1.33	3.38	22.94	7.12	0.26
	Std. Dev.	0.65	0.22	0.43	16.66	1.74	0.18
Arms	Median	16.2	1.1	3.2	40	15.5	0.15
	Mean	16.83	1.35	3.48	78.56	12.38	0.21
	Std. Dev.	0.99	0.51	0.93	67.51	7.86	0.20

NOTE—The statistics are determined for the ensemble of 1DMax solutions across the pixels. The standard deviation does not reflect the uncertainties in the 1D likelihoods of each pixel.

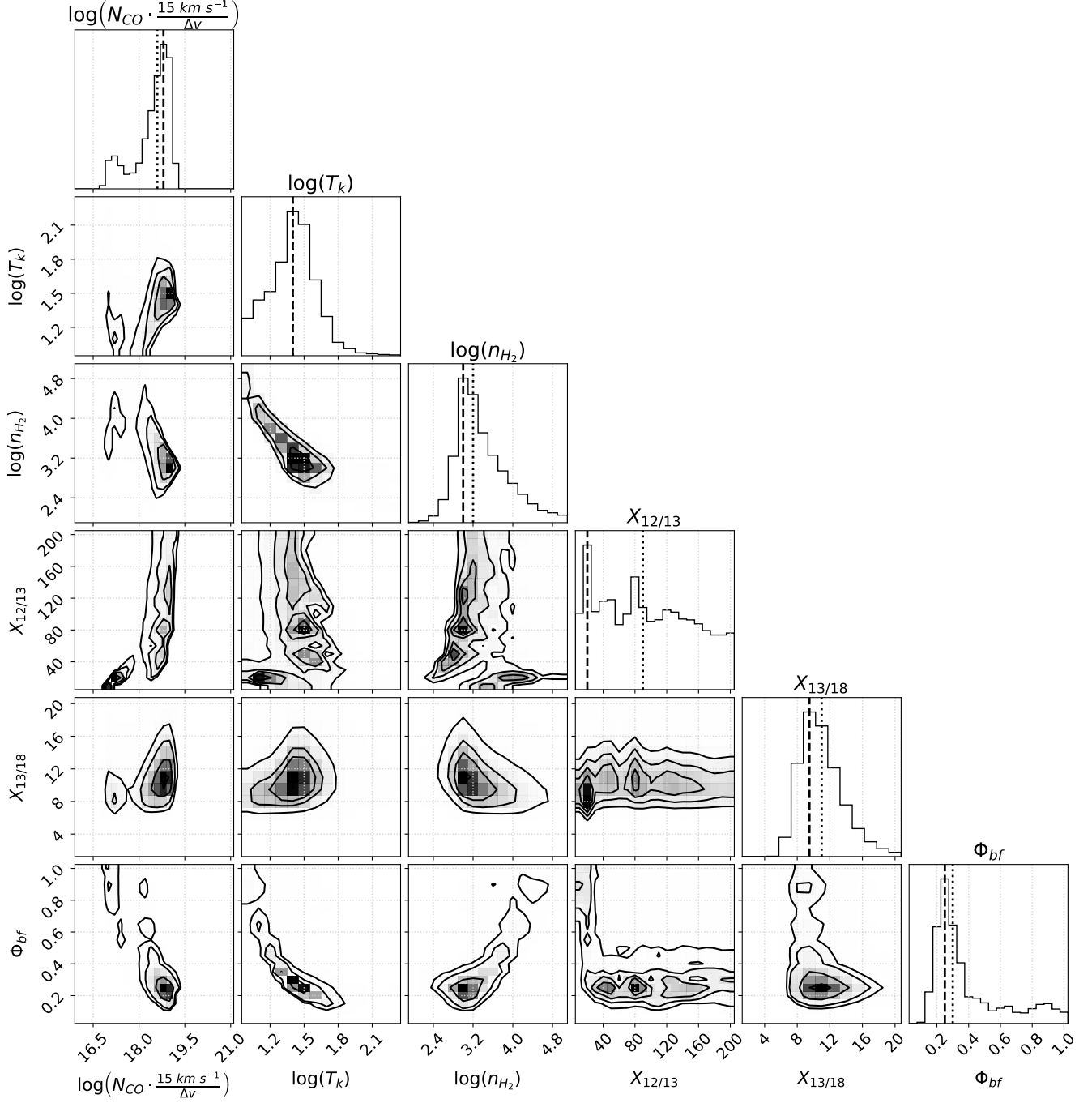


Figure 6. Marginalized 1D and 2D likelihood distributions of a faint pixel at (R.A., Decl.) = ($10^{\text{h}}43^{\text{m}}57.8^{\text{s}}$, $11^{\circ}42'15''.5$) in the gap region between the ring and the nucleus. See the caption of Figure 5 for more information.

constrained than other parameters, we will show that the 1DMax solutions of $X_{12/13}$ are consistent over the central ~ 1 kpc region.

We note that some parameters show correlations in their 2D likelihoods, including $N_{\text{CO}}-n_{\text{H}_2}$, $T_{\text{k}}-n_{\text{H}_2}$, and $N_{\text{CO}}-\Phi_{\text{bf}}$. Below the critical densities of the optically thin lines (see Table 1), the emissivity depends on the density. Therefore, the anti-correlation between

N_{CO} and n_{H_2} is expected, as a larger column density is needed to produce the same emission if we decrease the volume density with all other parameters fixed. Similarly, as n_{H_2} decreases, T_{k} has to increase to produce the same intensity if all other parameters remain unchanged. The inversely correlated $N_{\text{CO}}-\Phi_{\text{bf}}$ may imply well-constrained total mass of CO, as $M_{\text{mol}} \propto N_{\text{CO}} \Phi_{\text{bf}}$ (see Equation 9). In Figure 7, we show how well the

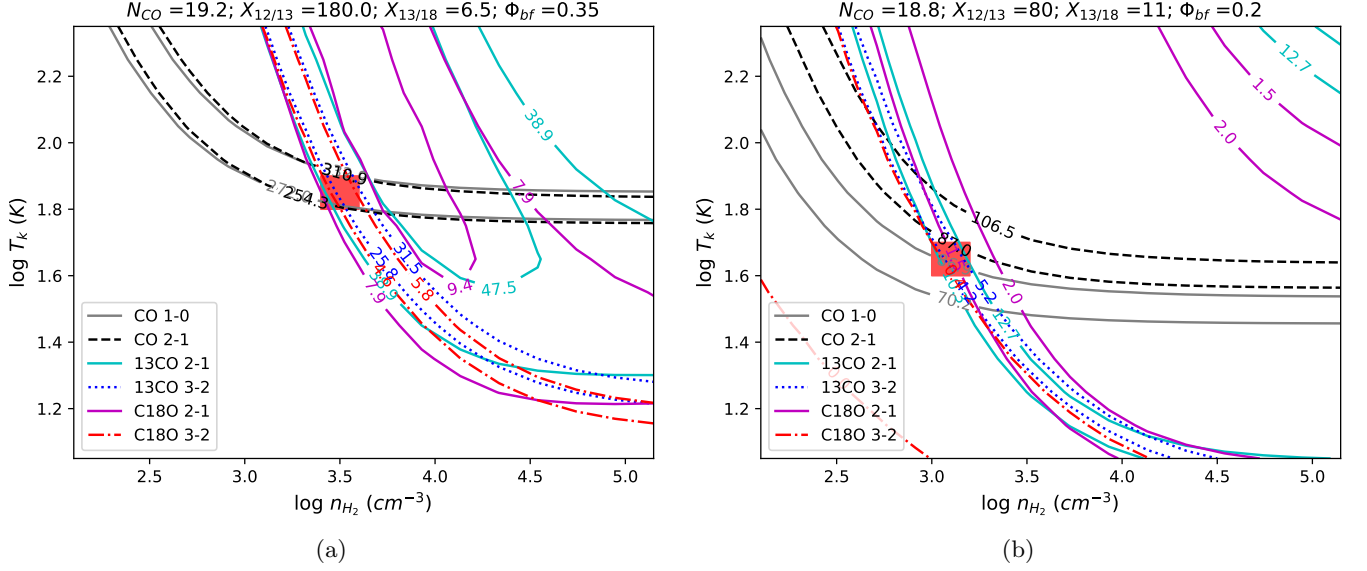


Figure 7. Best-fit (i.e. highest likelihood) constraints from the six observed line fluxes at the same pixel as in (a) Figure 5 and (b) Figure 6. Contours show the ranges of observed line intensities $\pm 1\sigma$ uncertainties, including the measurement uncertainty from the data and a 10% flux calibration uncertainty. Red boxes represent the best-fit solutions. Note that these are the solutions with the lowest χ^2 value in the full grid, not the 1DMax solutions based on marginalized probability distributions, and thus the $X_{12/13}$ values here deviate from the lower $X_{12/13} \sim 20$ suggested by 1DMax solutions. Except for $X_{12/13}$, other parameters are similar to the 1DMax solutions as their 1D likelihoods are single-peaked and well-constrained.

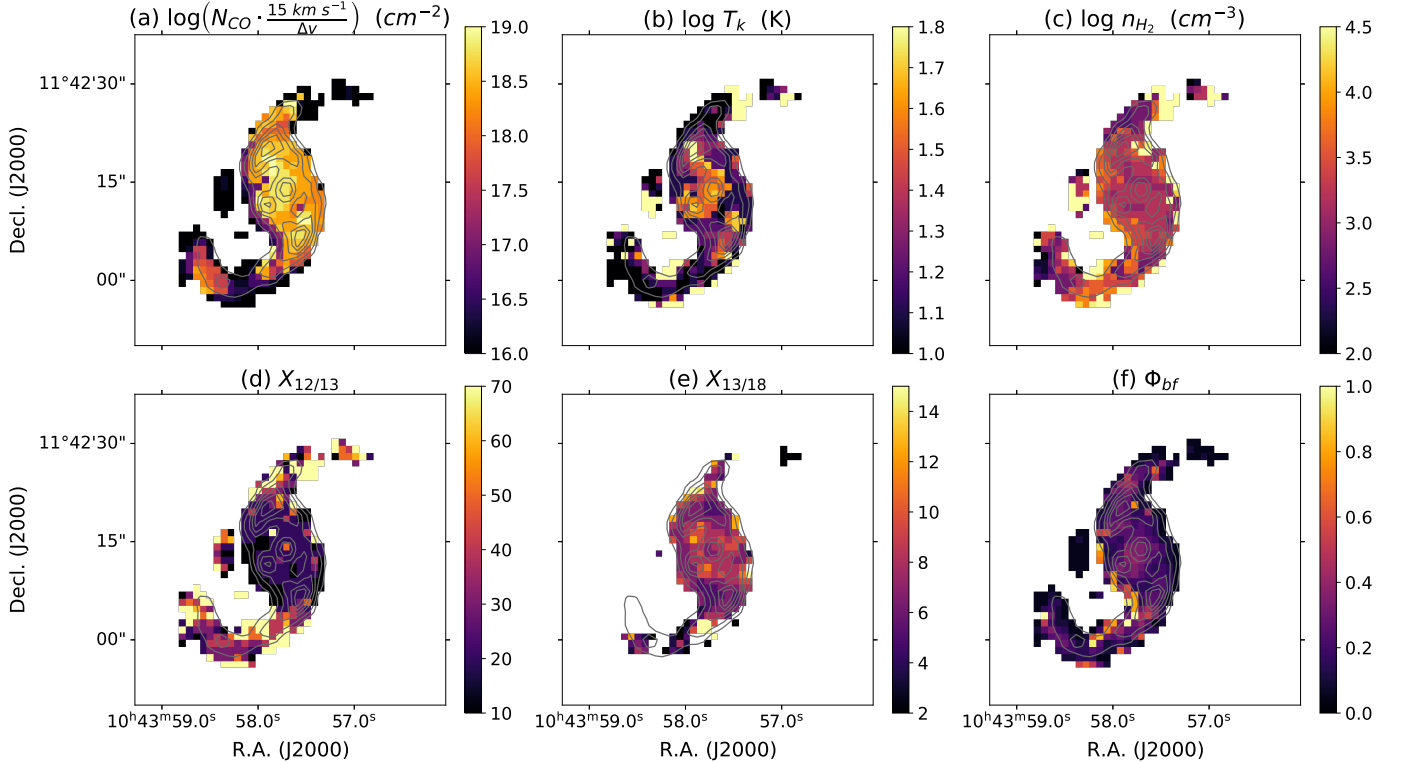


Figure 8. Maps of the 1DMax physical conditions derived from the one-component model. Panel (a) shows $\log(N_{\text{CO}})$ assuming a constant line width of 15 km s^{-1} over the whole region. Contours represent the CO 2–1 emission shown in Figure 1b. A 1σ mask of the C^{18}O 2–1 image is applied to (e). These results show that N_{CO} is higher in the center, T_k is higher near the nucleus and the contact points, and n_{H_2} is overall $\sim 2 \times 10^3 \text{ cm}^{-3}$. The $X_{12/13}$ and $X_{13/18}$ abundances are found to be consistent with those in the center of Milky Way.

best-fit (i.e. highest likelihood in the grid) solutions for the two corresponding pixels in Figures 5 and 6 match the constraints given by the observed line fluxes. The contour values are set as the ranges of observed line intensities $\pm 1\sigma$ uncertainties, which include the measurement uncertainty from the data and a 10% flux calibration uncertainty. Note that the best-fit solutions of $X_{12/13}$ also deviate from the 1DMax solutions at $\sim 20\text{--}30$.

We present the pixel-by-pixel maps and regional statistics of all six 1DMax parameters in Figure 8 and Table 4, respectively. It is clear that the CO column densities are highest in the center and the ring, while the average H_2 densities are similar in all regions. Although the average temperatures from Table 4 are also similar in each region, Figure 8b reveals a higher kinetic temperature of $\sim 30\text{--}60$ K near the nucleus and both contact points. High-resolution studies at pc scales toward the inner ~ 500 pc (Central Molecular Zone, CMZ) of the Milky Way suggested a dominant gas component with a temperature of $\sim 25\text{--}50$ K (Longmore et al. 2013; Ginsburg et al. 2016; Krieger et al. 2017), which is consistent with the temperatures we find near the nucleus and contact points. In addition, we find that these peaks in the T_k map cover several circumnuclear star-forming regions identified by previous UV, $\text{H}\alpha$, near-infrared or radio observations (Colina et al. 1997; Planesas et al. 1997; Hägele et al. 2007; Linden et al. 2020; Calzetti et al. 2021), and thus higher temperatures could be related to the heating from young stars. We also find consistent 1DMax values of $X_{12/13} \sim 20\text{--}30$ and $X_{13/18} \sim 6\text{--}10$ inside the central ~ 1 kpc region. Unlike $X_{12/13}$, the 1DMax solutions for $X_{13/18}$ are consistent with the medians and are very well constrained over the central region. Both the 1DMax $X_{12/13}$ and $X_{13/18}$ abundance ratios are consistent with those found in the central kpc of the Milky Way (Langer & Penzias 1990; Wilson & Rood 1994; Milam et al. 2005; Wouterloot et al. 2008; Areal et al. 2018). We note that only the “center” pixels defined in Figure 2c have $\text{S/N} > 3$ in the C^{18}O images, and thus pixel-by-pixel estimation beyond this region could be subject to larger uncertainties. Therefore, to examine our pixel-based results in the arm regions, we conduct similar analysis using stacked spectra in Section 5.2.

4.3. Two-Component Models

While single-component modeling has been widely used to determine physical properties of molecular gas in various galaxies (e.g., Topal et al. 2014; Sliwa et al. 2017; Imanishi et al. 2018; Teng & Hirano 2020), it is likely that the molecular line emission comes from mul-

tiple gas components with different physical conditions (e.g., Ginsburg et al. 2016; Barnes et al. 2017; Krieger et al. 2017). Some studies have modeled the gas with smoothly varying distributions of temperatures and densities (e.g., Leroy et al. 2017; Bisbas et al. 2019; Liu et al. 2021), while others modeled the emission with a warm and cold or dense and diffuse component (e.g., Kamenetzky et al. 2014; Schirm et al. 2014; Liu et al. 2015). In addition, theoretical expectation for isolated and virialized molecular clouds and suggestively some observational studies of galaxy centers imply a two-phase molecular gas with a high- α_{CO} dense component and a low- α_{CO} diffuse component (e.g. Papadopoulos et al. 2012a; Leroy et al. 2015). Israel (2020) also conducted a two-phase analysis toward the centers of ~ 100 galaxy samples with single dish measurements, although NGC 3351 was not included. To test how multiple gas components could change our results, we construct a two-component model of $N_{\text{CO}}/\Delta v$, T_k , n_{H_2} , and Φ_{bf} . This is primarily to see if we get dramatically different results if we change our assumptions about the gas components.

Based on the consistent 1DMax values of $X_{12/13}$ and $X_{13/18}$ from the one-component modeling and their consistency with the values of the Milky Way center, we assume fixed isotopologue abundances of $X_{12/13} = 25$ and $X_{13/18} = 8$ for both gas phases. The two-component model can thus be described by eight parameters, namely, four parameters for each gas phase. We remind the readers that even if the 1DMax values of $X_{12/13}$ are consistently at ~ 25 in the one-component modeling, the 1D likelihoods of $X_{12/13}$ are loosely constrained; the $X_{13/18}$ likelihoods, on the other hand, are well-constrained at 6–10 (see Figure 5 and 6). Jiménez-Donaire et al. (2017) have observed the central kpc of NGC 3351 at a $8''$ resolution with ^{13}CO and C^{18}O 1–0 and suggested a $X_{13/18}$ value that is also consistent with our one-component modeling as well as the Galactic Center value. Nevertheless, we note that applying fixed, Galactic Center-like abundance ratios to the two-component modeling may be a rather strict assumption. We emphasize that the primary goal of our two-component model is to test if the solutions will differ substantially after altering the assumption in the numbers of gas components, and this goal can be achieved by comparing the solutions of $N_{\text{CO}}/\Delta v$, T_k , or n_{H_2} while fixing the isotopologue abundances to remain consistent with the one-component modeling.

Due to large grid size of the 8D model, we slightly adjust the parameter ranges and step sizes (see Table 3): $N_{\text{CO}}/\Delta v$ ranges from $10^{16}/15$ to $10^{19}/15$ $\text{cm}^{-2} (\text{km s}^{-1})^{-1}$ in steps of 0.25 dex, T_k ranges from 10 to 100 K in steps of 0.1 dex, $\log(n_{\text{H}_2} [\text{cm}^{-3}])$ ranges

Table 5. 1DMax Solutions from Two-Component Modeling

Region		$\log \left(N_1 \frac{15 \text{ km s}^{-1}}{\Delta v} \right)$ (cm^{-2})	$\log T_1$ (K)	$\log n_1$ (cm^{-3})	$\log \Phi_1$	$\log \left(N_2 \frac{15 \text{ km s}^{-1}}{\Delta v} \right)$ (cm^{-2})	$\log T_2$ (K)	$\log n_2$ (cm^{-3})	$\log \Phi_2$
Whole	Median	17.00	1.1	3.75	-0.6	17.00	2.0	3.25	-0.8
	Mean	17.01	1.27	3.55	-0.68	17.17	1.74	3.00	-0.79
	Std. Dev.	0.85	0.31	0.74	0.42	1.00	0.36	0.64	0.40
Center	Median	17.75	1.3	3.50	-0.5	18.25	2.0	3.25	-0.7
	Mean	17.80	1.38	3.61	-0.55	18.11	1.90	3.15	-0.71
	Std. Dev.	0.53	0.25	0.48	0.30	0.45	0.24	0.39	0.26
Ring	Median	17.75	1.4	3.75	-0.5	18.00	2.0	3.25	-0.7
	Mean	17.83	1.42	3.65	-0.57	18.11	1.89	3.16	-0.74
	Std. Dev.	0.58	0.26	0.94	0.34	0.47	0.27	0.39	0.29
Arms	Median	16.25	1.0	3.50	-0.6	16.25	1.9	3.25	-0.8
	Mean	16.38	1.13	3.36	-0.71	16.39	1.67	2.88	-0.77
	Std. Dev.	0.45	0.25	0.83	0.48	0.55	0.37	0.70	0.47

NOTE—The denser component is represented as the first component, i.e., (N_1, T_1, n_1, Φ_1) .

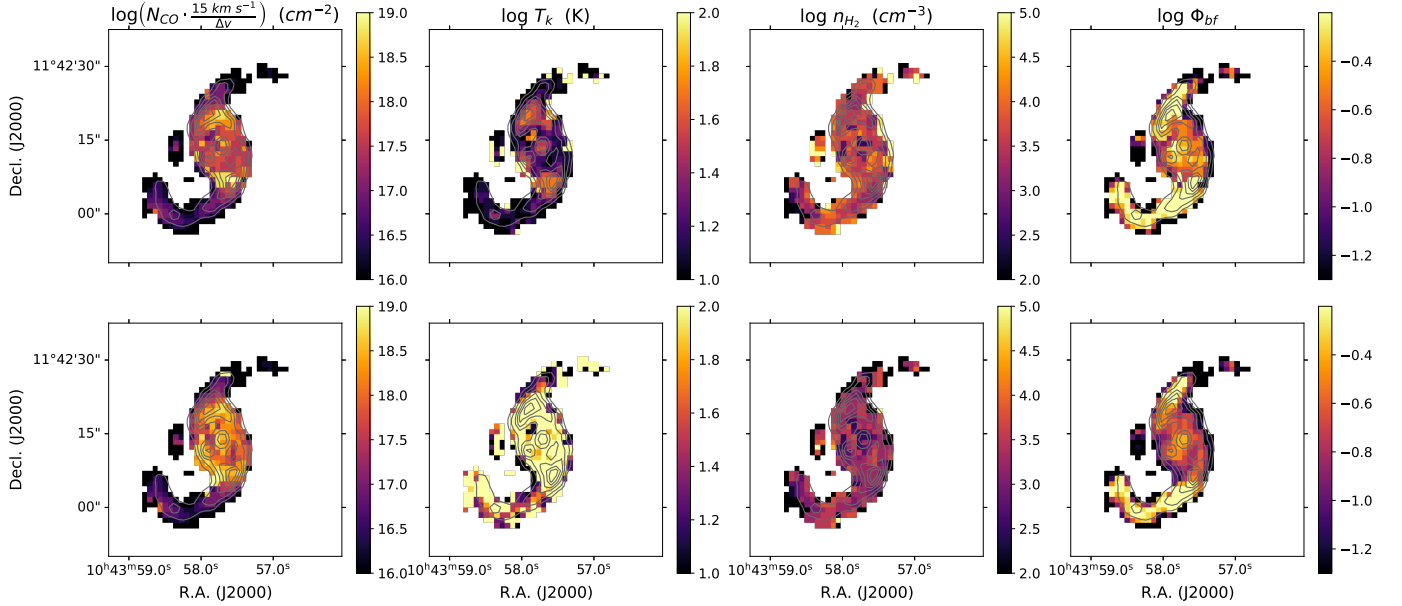


Figure 9. Maps of the 1DMax physical conditions derived from the two-component model. The top row shows the denser component having higher n_{H_2} and the bottom row shows the more diffuse gas phase. The two components have similar physical properties, with a ≤ 0.5 dex difference in each parameter. This is likely the reason why the two-component model results in similar solutions and spatial variations compared to the one-component model.

from 2 to 5 in steps of 0.25 dex, and $\log(\Phi_{\text{bf}})$ ranges from -1.3 to -0.1 in steps of 0.1 dex. We lower the upper limit of T_{k} to 100 K in the two-component model grids because the sensitivity to distinguish different temperatures above 100 K is very weak with $J=3-2$ as the highest transition. In addition, the one-component modeling results show that T_{k} is well below 100 K across the whole region. We also lower the upper limit of $N_{\text{CO}}/\Delta v$ to $10^{19}/15$ because a higher value is normally ruled out

by the line-of-sight constraint of $\ell_{\text{los}} < 100$ pc as mentioned in Section 4.2.

The 8D model grid consists of all combinations of either two components from the 4D parameter space. By summing up the predicted intensities of both components, each grid point has a prediction of the total integrated intensity. Since the two components are interchangeable under summation, nearly half of the grid points are redundant, and we thus require the first component to have higher T_{k} than the second component.

This not only allows us to distinguish between warm and cold or dense and diffuse components, but also avoids getting the exact same marginalized likelihoods for both components due to symmetric model grids. Similar to the 6D one-component modeling, we include a 10% flux calibration uncertainty and the measurement uncertainties for fitting.

When deriving the values of N_{CO} , we assume both components to have the same line widths as the observed CO 1–0 line width. This assumption has negligible effect on our α_{CO} results in Section 5, as N_{CO} and Φ_{bf} are being fit simultaneously to determine α_{CO} values, which means that the two parameters can adjust themselves to fit best with the line intensities. In addition, we mostly observed a single-peaked spectrum which can be well represented by a single line width (see Figure 4), so assuming the same line widths as the measured line width is likely the most feasible thing we could do in the two-component analysis. If both components have Gaussian spectra, this assumption would imply that both components are at the same velocity.

Figure 9 shows the 1DMax solutions from the two-component modeling, where the component with higher n_{H_2} is shown in the top row. Regional statistics are also summarized in Table 5 with the denser component being presented as the first component. We note that the separation by density is made for visualization purposes and has no role in the subsequent calculation of α_{CO} . In general, the dense components correspond to lower T_{k} and N_{CO} values than the diffuse components, which is similar to the correlations observed in the one-component result within the probability distribution of a single pixel. From the regional averages of both components (see Table 5), we find that the differences in N_{CO} , n_{H_2} and Φ_{bf} between the two components are all less than ~ 0.5 dex. Moreover, the difference between their masses, which are proportional to their N_{CO} and Φ_{bf} (see Equation 9), is even found to be less than ~ 0.3 dex. This means that the two components have similar physical properties. We also find these properties to be similar to those suggested by the one-component model. For example, the 1DMax n_{H_2} distribution from the two-component model suggests a density of $\sim 2\text{--}3 \times 10^3 \text{ cm}^{-3}$ in the center, which is consistent with $\sim 2 \times 10^3 \text{ cm}^{-3}$ suggested by the one-component model. These are also similar to the average gas density of $\sim 5 \times 10^3 \text{ cm}^{-3}$ found in the Milky Way’s CMZ (e.g., Longmore et al. 2013). The only substantial difference between our two-component solutions is the kinetic temperature. While the denser component has a similar range of temperature and region-by-region variations as observed in the one-component model (see Figure 8b), the other component shows evidently higher

kinetic temperature of ~ 100 K over the whole region. These temperatures are quantitatively similar to previous two-component studies toward the GMCs in our Galactic Center, which suggest a dominant component by mass with $T_{\text{k}} \sim 25\text{--}50$ K and a less-dominant warm component with $T_{\text{k}} \gtrsim 100$ K (e.g., Huettemeister et al. 1993; Krieger et al. 2017). We thus conclude that the dominant component in our two-component model is well-represented by the one-component model alone, but there might be a secondary, warmer component unaccounted for in the one-component model, as previously seen in the Galactic CMZ.

4.4. Marginalized 1D Likelihoods

In this subsection, we describe the unified procedure of how we generate and deal with the marginalized likelihoods and then derive plausible solutions for parameters like α_{CO} . This is fundamental to the results presented in Section 5.

In Sections 4.2 and 4.3, we derived the marginalized 1D likelihoods for each input parameter. In both cases, we have a full 6D or 8D grid, with each grid point having an associated probability. Since our input parameters are sampled uniformly, their marginalized 1D likelihood distribution is simply a probability-weighted histogram, where the probability value of each grid point is reflected proportionally in the number of counts toward each bin. On the other hand, to derive the marginalized likelihoods of parameters that are functions of the intrinsic grid parameters (e.g., the modeled line intensities or α_{CO}), an additional normalization on the histograms would be needed due to the possibility of irregular sampling on the derived parameter grid space. For instance, given the grids of modeled line integrated intensities, we could determine 1D likelihoods for each line intensity with some chosen bin spacing and range. However, since multiple combinations of parameters in the 6D or 8D grid space could produce the same integrated intensity, and some line intensities may only be produced by a small subset of the parameter combinations, the resulting 1D likelihoods will have an additional non-uniform weighting due to the starting grid. To properly deal with the grid irregularity, we can generate a uniformly weighted histogram for line intensities under the same parameter range and bin size, treating that as a normalization. To obtain the marginalized 1D likelihood of any derived parameter from the original grid, we divide the probability-weighted histogram by the uniformly weighted histogram to normalize out any grid irregularity. The marginalized likelihoods of α_{CO} , which is a function of N_{CO} , Φ_{bf} , and the CO 1–0 line intensity, can also be derived in this way (see Section 5).

Once the 1D likelihood distributions of a parameter are obtained, we can determine either the 1DMax solutions by finding the values that correspond to the peaks, or the medians, and $\pm 1\sigma$ values by finding the 16th and 84th percentiles of the cumulative 1D likelihood distribution. Then, maps of the 1DMax solutions or medians $\pm 1\sigma$ can be generated by iterating over each pixel. While we could look individually into the likelihood distributions at each pixel, comparing between these maps is a more simple and feasible way to get a sense of the probability distribution in different regions of the galaxy. With this procedure, it is important to note that our solutions for α_{CO} in Section 5 do not rely on the individually derived N_{CO} and Φ_{bf} distributions presented in Sections 4.2 and 4.3, since those parameters are being fit simultaneously within the full grid before we obtain the marginalized likelihoods of α_{CO} .

5. CO-TO-H₂ CONVERSION FACTOR

The CO-to-H₂ conversion factor (α_{CO}) is defined as the ratio of molecular gas mass to CO 1–0 luminosity (Dickman et al. 1986; Bolatto et al. 2013), which is also equivalent to the ratio of molecular gas mass surface density to CO 1–0 intensity:

$$\alpha_{\text{CO}} = \frac{M_{\text{mol}}}{L_{\text{CO}(1-0)}} = \frac{\sum_{\text{mol}}}{I_{\text{CO}(1-0)}} \left(\frac{M_{\odot}}{\text{K km s}^{-1} \text{ pc}^2} \right). \quad (8)$$

The CO 1–0 luminosity is the CO 1–0 intensity multiplied by the area in square parsecs, and the molecular gas mass is proportional to the product of CO column density and the filling factor times the area (Kamenetzky et al. 2014):

$$M_{\text{mol}} = 1.36 m_{\text{H}_2} N_{\text{CO}} A \Phi_{\text{bf}} x_{\text{CO}}^{-1}, \quad (9)$$

where A is the same area as that in CO 1–0 luminosity. Therefore, Equation 8 can be rewritten as

$$\begin{aligned} \alpha_{\text{CO}} &= \frac{1.36 m_{\text{H}_2} (M_{\odot}) N_{\text{CO}} (\text{cm}^{-2}) A (\text{cm}^2) \Phi_{\text{bf}}}{x_{\text{CO}} I_{\text{CO}(1-0)} (\text{K km s}^{-1}) A (\text{pc}^2)} \\ &= \frac{1}{4.5 \times 10^{19}} \cdot \frac{N_{\text{CO}} (\text{cm}^{-2}) \Phi_{\text{bf}}}{x_{\text{CO}} I_{\text{CO}(1-0)} (\text{K km s}^{-1})}, \end{aligned} \quad (10)$$

where m_{H_2} is the mass of molecular hydrogen, 1.36 is the factor after including the mass contribution from Helium, and x_{CO} is the CO-to-H₂ abundance ratio. The x_{CO} value in different galaxies or metallicity conditions can vary from 0.5 – 5×10^{-4} (e.g., Frerking et al. 1982; Black et al. 1990; Downes & Solomon 1998; Sliwa et al. 2012) and is commonly assumed as $\sim 10^{-4}$. In our analysis, we assume a higher x_{CO} value of 3×10^{-4} , which is typically found and/or adopted in starburst regions (Lacy et al. 1994; Ward et al. 2003; Kamenetzky et al.

2012, 2014; Sliwa et al. 2014, 2017). This means that the absolute value of our derived α_{CO} is accurate only when $x_{\text{CO}} = 3 \times 10^{-4}$, and the true α_{CO} can be represented as $\alpha_{\text{CO}}^{\text{true}} = \alpha_{\text{CO}} \times (3 \times 10^{-4} / x_{\text{CO}})$. Therefore, we note that our results on the α_{CO} values depend inversely on any variation of x_{CO} , and that the spatial variation of our derived α_{CO} could partially result from spatial variations in x_{CO} .

With Equation 10, we derive the spatial distribution of α_{CO} using the approach described in Section 4.4: for each pixel, we first calculate an α_{CO} value for every grid point in the model using the corresponding N_{CO} , Φ_{bf} , and predicted CO intensity S^{mod} , and then marginalize over the whole grid to obtain the 1DMax value of α_{CO} . We apply this method to both one- and two-component modeling results and compare the derived α_{CO} distributions.

5.1. α_{CO} from the Modeling Results

Using the method described in Section 4.4, we derive the marginalized 1D likelihoods of $\log(\alpha_{\text{CO}})$ for each pixel with $\log(\alpha_{\text{CO}})$ ranging from -2.5 to 2.5 in steps of 0.125 . Figures 10 and 11 present the α_{CO} variations derived from the one-component and two-component modeling, respectively. The marginalized 1DMax α_{CO} shown in Figure 10a reveals an average of $\sim 2 M_{\odot} (\text{K km s}^{-1} \text{ pc}^2)^{-1}$ in the inner 1 kpc region, while the α_{CO} along the arms is a factor of ~ 10 lower than the center. Figure 10b shows how the median and 1DMax α_{CO} vary with the galactocentric radius of NGC 3351. Both the median and 1DMax α_{CO} values exhibit a slow decrease from the nucleus to the ring and a significant drop at a radius of $\sim 10''$ (~ 0.5 kpc), which is where the ring and the arms intersect. Interestingly, while α_{CO} remains roughly constant at a radius of ~ 10 – $20''$, it starts to increase beyond a radius of $\sim 20''$. We find that the $\gtrsim 20''$ region corresponds to the curved-up feature in the southern arm (see Figure 2c). This region is called the “transverse dust lane” in Leaman et al. (2019), where they suggested the feature as evidence for an outflow pushing gas/dust away from the nuclear ring via stellar feedback processes.

Overall, all the pixels in our observed region show at least factor of ~ 2 – 3 (0.3 – 0.5 dex) lower α_{CO} values than the Milky Way average at the assumed x_{CO} of 3×10^{-4} . If x_{CO} were set to be 10^{-4} , α_{CO} would increase by a factor of three. In such a case, the central 1 kpc region would have a nearly Galactic α_{CO} , whereas the α_{CO} is still substantially lower in the inflow arms since a global change in x_{CO} would not change the relative drop in α_{CO} . Note that if there were spatial variations of x_{CO} across this region, it could alter our α_{CO} varia-

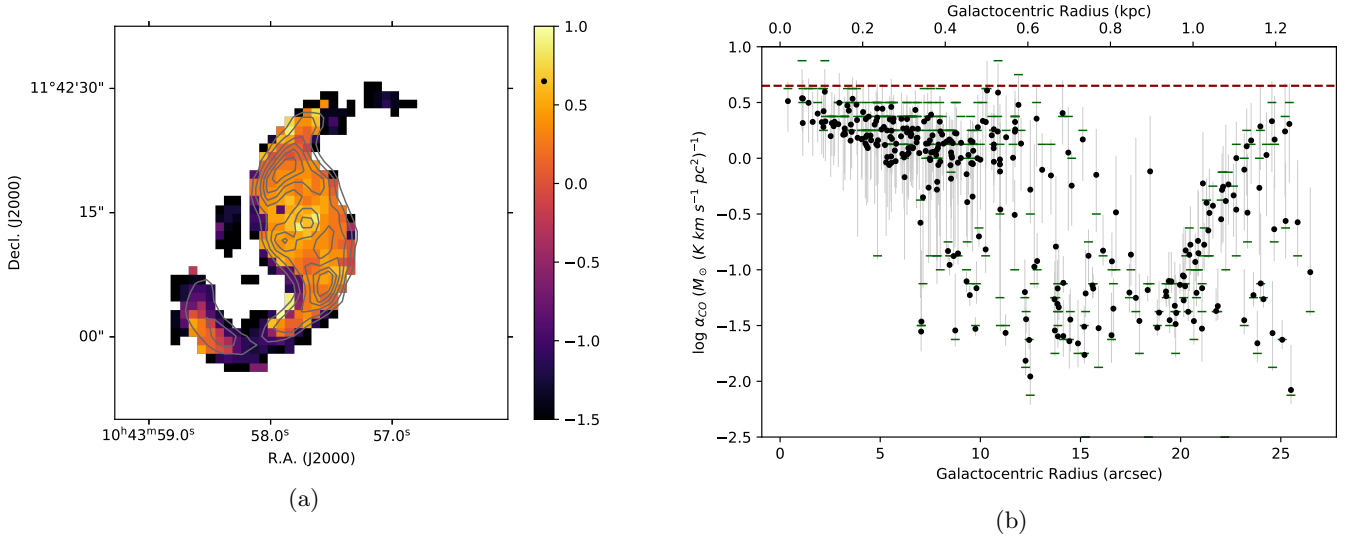


Figure 10. α_{CO} variations determined by the one-component modeling results. (a) 1DMax $\log(\alpha_{\text{CO}})$ map in units of $M_{\odot} (\text{K km s}^{-1} \text{pc}^2)^{-1}$; the contours show zeroth moment of CO 1–0 and the black dot on the color bar indicates the Galactic average value of $\alpha_{\text{CO}} \sim 4.4 M_{\odot} (\text{K km s}^{-1} \text{pc}^2)^{-1}$. (b) Relation between the median α_{CO} (black dots) and galactocentric radius; the green horizontal lines represent the 1DMax α_{CO} and the vertical lines show the 1σ ranges (16th–84th percentiles); the red dashed line shows the Galactic disk average value of $\alpha_{\text{CO}} \sim 4.4 M_{\odot} (\text{K km s}^{-1} \text{pc}^2)^{-1}$. In the center, the median and 1DMax α_{CO} values are only slightly below the Galactic disk average, and decrease slowly from the nucleus to the ring. Beyond a galactocentric radius of $\sim 10''$, α_{CO} drops significantly to a value that is approximately an order of magnitude lower than the Galactic disk average.

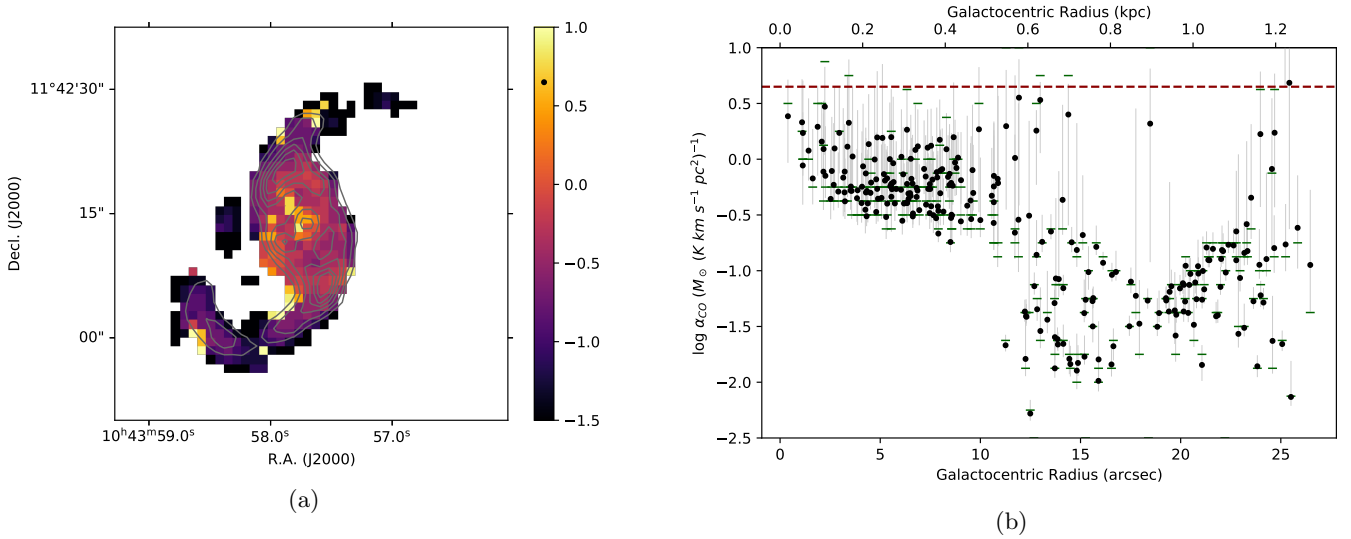


Figure 11. α_{CO} variations determined by the two-component modeling results. (a) 1DMax $\log(\alpha_{\text{CO}})$ map in units of $M_{\odot} (\text{K km s}^{-1} \text{pc}^2)^{-1}$. (b) Relation between the median/1DMax α_{CO} and galactocentric radius, determined by the marginalized α_{CO} likelihoods from the two-component models. See the caption of Figure 10 for more information. The spatial variation of α_{CO} and the values in the arms are similar to that derived from the one-component model, while the values in the center are a factor of 2–3 lower.

tion results. [Leaman et al. \(2019\)](#) estimated the circular rotational velocity to be 150–200 km s^{−1} on the circumnuclear ring of NGC 3351, implying a gas rotation period of 15–20 Myr. Since this orbital time scale is much shorter than the stellar evolution time scale that can cause a difference in chemical abundances, we expect the abundances of carbon and oxygen to be well-mixed in the central kpc of NGC 3351, and thus sub-kpc scale variations of x_{CO} should be small if x_{CO} is essentially determined by the availability of carbon and oxygen. Despite such expectation, we emphasize that disentangling x_{CO} variations and α_{CO} is infeasible under current modeling and measurements. Therefore, our estimated α_{CO} distribution can be affected if there is any x_{CO} variation on sub-kpc scales.

The 1DMax α_{CO} distributions derived from the two-component modeling results, as shown in Figure 11a, suggest a similar spatial variation to that determined by the one-component results, while the α_{CO} values in the center are generally lower than those in Figure 10a. Figure 11b shows the median and 1DMax solutions determined from the marginalized α_{CO} likelihoods and their variation with galactocentric radius. The α_{CO} solutions inside the central 1 kpc region are shifted ~ 0.3 – 0.5 dex downward compared with Figure 10b. On the other hand, the α_{CO} solution in the inflow arms is consistent with Figure 10b, and we can see a clear distinction between α_{CO} values in the center and inflow regions, which are separated at the 10'' or 0.5 kpc radius. We note that the possible cause for a ~ 0.3 – 0.5 dex shift of α_{CO} solutions in the center may originate from the assumption of a fixed $X_{12/13}$ at 25. The 2D correlations in Figure 5 and 6 show that $X_{12/13} = 25$ corresponds to a lower $N_{\text{CO}}/\Delta v$ and a higher Φ_{bf} compared with the 1DMax solutions, which may altogether result in a 0.3–0.5 dex offset in α_{CO} . In general, both our one- and two-component models result in lower-than-Galactic α_{CO} values for the entire observed region and significantly ($\gtrsim 10\times$) lower α_{CO} values in the inflow arms. Furthermore, by comparing with the derived T_{k} distributions shown in Figure 8b, there is no sign that lower α_{CO} are associated with higher temperatures (see discussion in Section 6). In Section 5.2, we will discuss possible scenarios that cause the α_{CO} variation and such low α_{CO} values in the arms.

To compare the derived α_{CO} with those observed previously at kpc scales, we compute the intensity-weighted mean α_{CO} over our entire observed region of ~ 2 kpc. The intensity-weighted mean α_{CO} is calculated as the ratio of total molecular mass to the total luminosity over the whole region. Based on Equation 10, this can be done with the full grids of the modeled N_{CO} , Φ_{bf} ,

and intensity of CO 1–0 (S^{mod}) at every pixel. For each pixel, we first perform a likelihood-weighted random draw from the model grids to obtain N_{CO} , Φ_{bf} , and the corresponding modeled $I_{\text{CO}(1-0)}$ value. Next, we sum up the values over the pixels to derive the total molecular mass and CO intensity, and then calculate the resulting intensity-weighted mean α_{CO} . We then perform another random draw and repeat 2000 times. Finally, the mean and standard deviation over the 2000 measurements of α_{CO} are obtained. This approach is a combination of Monte Carlo sampling with likelihood weighting of the model grids, and is similar to the “realize” method used by [Gordon et al. \(2014\)](#) for dust spectral energy distribution (SED) fitting.

The intensity-weighted mean α_{CO} of the entire region is 1.79 ± 0.10 and 1.11 ± 0.09 M_⊙ (K km s^{−1} pc²)^{−1} based on the one- and two-component models, respectively. Since the sum of our $I_{\text{CO}(1-0)}$ and $I_{\text{CO}(2-1)}$ over the entire observed region are similar, weighting either by the CO 1–0 or 2–1 intensities give approximately the same intensity-weighted mean α_{CO} . With an angular resolution of $\sim 40''$, [Sandstrom et al. \(2013\)](#) found an $\alpha_{\text{CO}(2-1)}$ of $1.0^{+0.4}_{-0.3}$ M_⊙ (K km s^{−1} pc²)^{−1} in the central 1.7 kpc of NGC 3351 using dust modeling with CO 2–1 intensities. This is similar to the intensity-weighted mean α_{CO} values derived from both our one- and two-component models. However, since they assumed a constant CO 2–1/1–0 ratio (R_{21}) of 0.7, they concluded a lower mean $\alpha_{\text{CO}(1-0)}$ value of $0.7^{+0.27}_{-0.20}$ M_⊙ (K km s^{−1} pc²)^{−1} appropriate for CO 1–0 intensities. While $R_{21} = 0.7$ may be a good approximation across galaxy disks (e.g., [den Brok et al. 2021](#)), studies on nearby galaxy centers have suggested higher R_{21} ($\gtrsim 0.9$) in the central kpc region of disk galaxies ([Israel 2020; Yajima et al. 2021](#)). As presented in Table 2, the mean R_{21} over our entire observed region is 1.0, and both our one- and two-component models predict a mean R_{21} higher than 0.9. Thus, if a higher R_{21} of > 0.9 had been adopted by [Sandstrom et al. \(2013\)](#), their α_{CO} estimates with CO 1–0 would be in good agreement with our modeling results.

5.2. α_{CO} in the Inflow Arms

As pixel-based analyses in the arm regions may have higher uncertainties due to low S/N, we stack the spectra from inflow regions to recover low brightness emission applying the approach by [Schruba et al. \(2011\)](#). First, we set the moment 1 velocities of CO 2–1 as the reference velocity (i.e., $v = 0$) for each pixel and shift the spectra from all other lines to $v = 0$. Next, we extract the spectra in the $v = \pm 100$ km s^{−1} range and sum them up to obtain a stacked spectrum for each line. Fig-

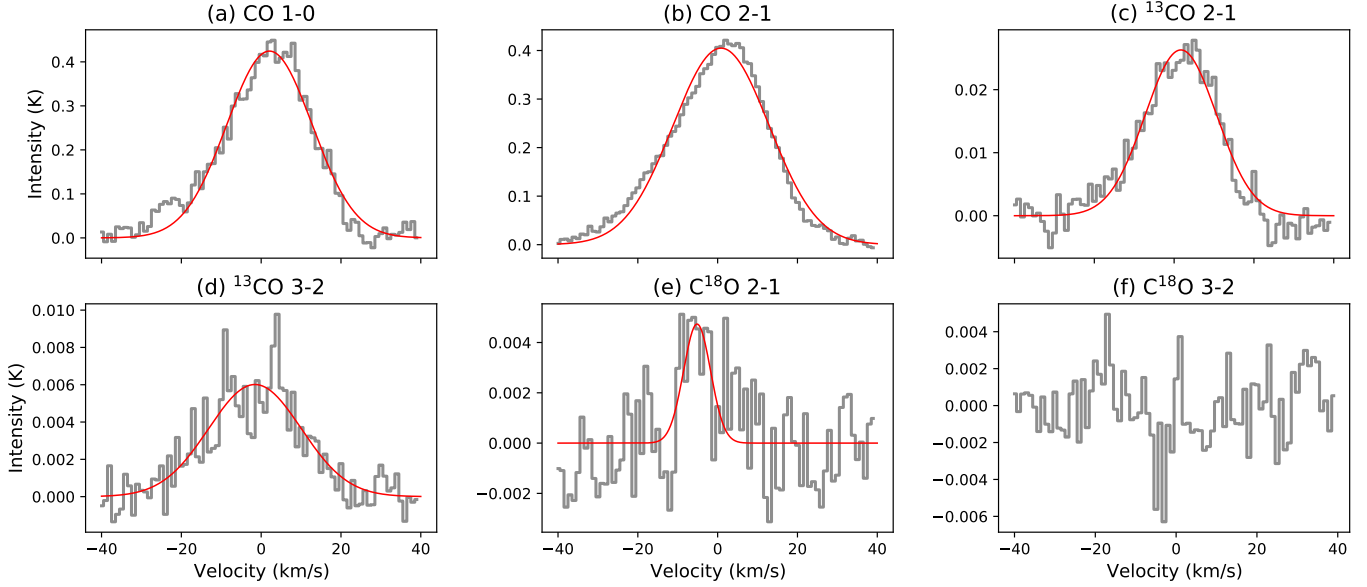


Figure 12. Shifted and averaged spectra over the inflow arms, overlaid with the best-fit Gaussian profiles. This stacking is used for the purpose of recovering faint emission from the arms and comparing with the pixel-based analysis. The integrated intensities of each line is estimated from the averaged spectra and then input to the multi-line modeling to determine the best-fit/1DMax solutions for environmental parameters and α_{CO} in the arm regions. The results of the modeling are shown in Figure 13 and 14.

ure 12 presents the shifted and stacked spectra over the arms (defined in Figure 2c), overlaid with the best-fit Gaussian function. The spectra of the ^{13}CO lines show much improvement in S/N after stacking. However, the spectrum of C^{18}O 3-2 is still noisy, as most pixels in the arms are below 1σ in C^{18}O 3-2 (see Figure 1) and therefore do not have reliable measurements even after stacking. Thus, we should be aware that C^{18}O 3-2 is not a significant detection in the stacked spectrum of inflow arms, and it is included in the fitting as an upper limit.

We measure the observed integrated flux of each line and use it as input to the multi-line modeling technique described in Section 4.2. Figures 13 and 14 show the likelihood distributions and the T_k - n_{H_2} slice where the best-fit parameter set lies. The 1DMax and best-fit physical conditions to the stacked spectra of inflow arms are found at $(N_{\text{CO}}/\Delta v, T_k, n_{\text{H}_2}, X_{12/13}, X_{13/18}, \Phi_{\text{bf}}) = (\frac{10^{16}}{15} \text{ cm}^{-2} (\text{km s}^{-1})^{-1}, 10 \text{ K}, 10^{3.6} \text{ cm}^{-3}, 30, 14, 0.05)$ and $(\frac{10^{16.6}}{15} \text{ cm}^{-2} (\text{km s}^{-1})^{-1}, 10 \text{ K}, 10^{4.4} \text{ cm}^{-3}, 30, 14, 0.3)$, respectively. Both solutions imply lower N_{CO} , lower T_k , and higher n_{H_2} in the arms compared with those in the central ~ 1 kpc. As shown in Figure 14, the constraints from five of the six lines have similar shapes, while CO 1-0 is the main constraint that pushes the solution to the lower-right corner. Therefore, even if we exclude the constraints from the C^{18}O lines that have low S/N in the arms, the best-fit solu-

tion would remain, which means that C^{18}O lines are not the key data in the arm regions. The line width determined by the best-fit Gaussian to the stacked CO 1-0 spectrum is $\Delta v_{\text{FWHM}} = 25.18 \pm 0.58 \text{ km s}^{-1}$. By substituting the best-fit or 1DMax solutions of $N_{\text{CO}}/\Delta v$ and Φ_{bf} , and the fitted CO 1-0 line width into Equation 10, the α_{CO} of inflow arms is estimated to be 0.01 – $0.1 \text{ M}_{\odot} (\text{K km s}^{-1} \text{ pc}^2)^{-1}$. This matches our pixel-based estimation in the arms despite with lower S/N, and thus supports the idea that the inflow regions have substantially lower α_{CO} values than the center/ring.

From Figure 3d and e, we find that the CO/ ^{13}CO and CO/ C^{18}O line ratios in the inflow arms are $\sim 2\times$ higher than in the center. This means that we observe more CO emission in the arms compared to the total molecular gas mass, which by definition indicates a lower α_{CO} value. One possible scenario that could cause such high line ratios are high CO/ ^{13}CO and CO/ C^{18}O abundance ratios. It is likely that the circumnuclear star formation activities have enriched ^{13}C or ^{18}O in the center but not in the inflows. This could lower the $X_{12/13}$ or $X_{13/18}$ abundances in the center and cause lower CO/ ^{13}CO and CO/ C^{18}O line ratios than those in the arms. However, both the best-fit and 1DMax solutions based on the stacked spectra of inflow arms suggest $X_{12/13} \sim 30$ and $X_{13/18} \sim 10$, which are similar to those found in the center region as shown in Figure 8d and e. Note that the 1D likelihood of $X_{12/13}$ is very well-constrained for the arm regions with stacking (see Figure 13), which

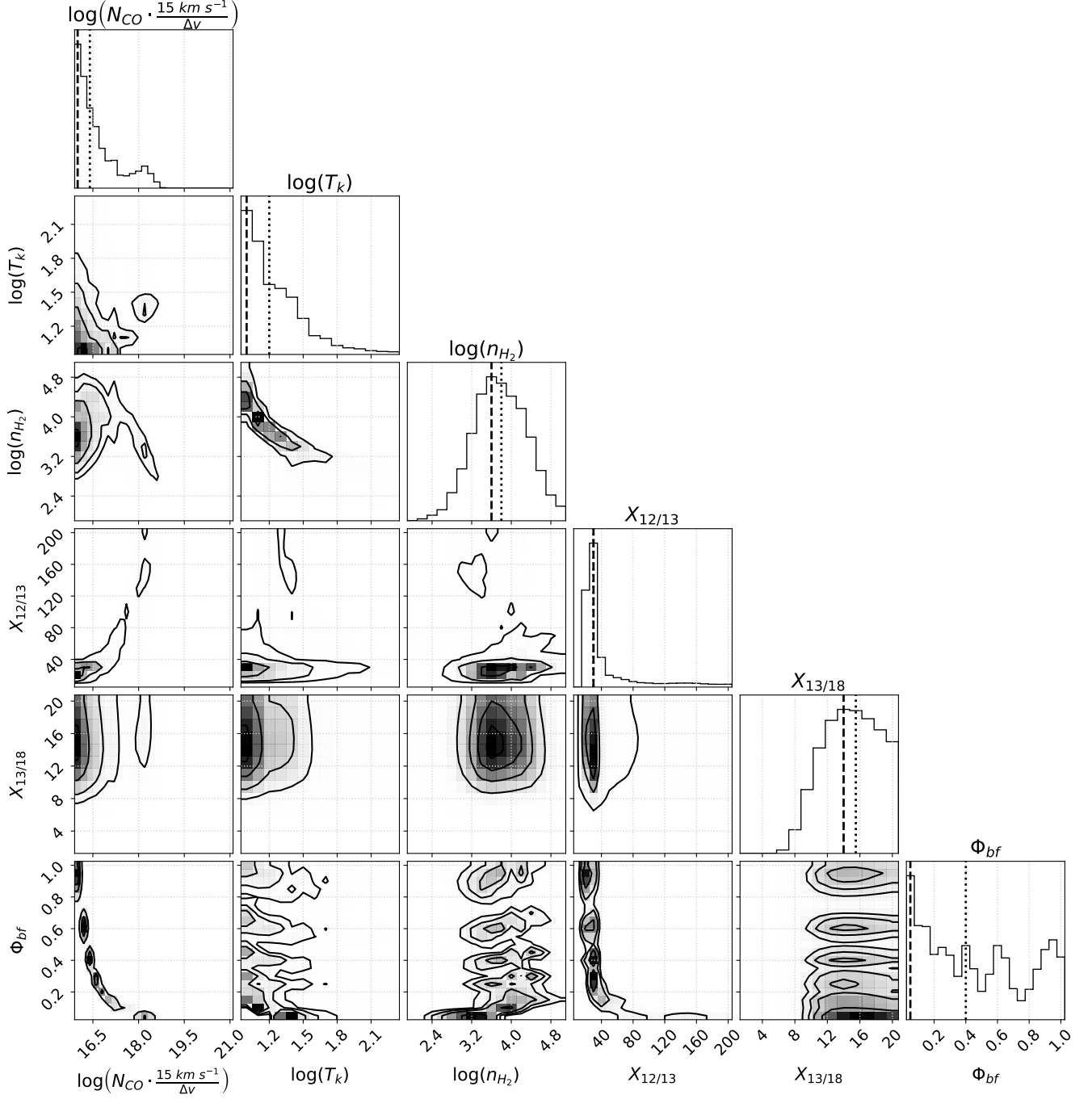


Figure 13. Marginalized 1D and 2D likelihood distributions of the stacked spectra from inflow arms. See the caption of Figure 5 for more information. Note that some of the parameters are less-constrained in these faint regions and thus pushing the solutions to the boundaries of the grid.

is different from the loosely constrained $X_{12/13}$ in the individual pixels of the center region. Even if the center pixels have higher $X_{12/13}$ (e.g., median $X_{12/13} \sim 90$ in Figure 5 and 6), this would contradict the expectation of star formation enrichment and would instead enhance $\text{CO}/^{13}\text{CO}$ and $\text{CO}/\text{C}^{18}\text{O}$ line ratios in the center. Therefore, changes in CO isotopologue abundances may

not be the main reason that causes higher line ratios in the inflow regions.

The high line ratios observed in $\text{CO}/^{13}\text{CO}$ and $\text{CO}/\text{C}^{18}\text{O}$ 2–1 could also be explained if the optical depths of CO changes significantly. Figure 2b reveals a broader line width in the arms, which may indicate a more turbulent environment or the existence of shear in these bar-driven inflows. This could lead to lower opti-

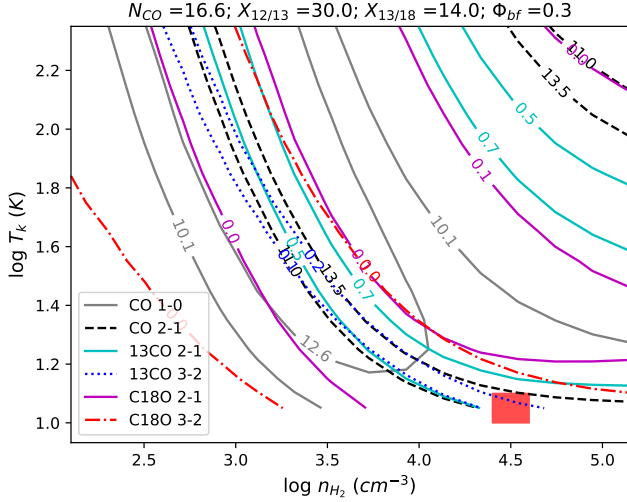


Figure 14. Constraints on the T_k – n_{H_2} slice where the best-fit parameter (red box) lies assuming a 10% flux uncertainty. See the caption of Figure 7 for more information.

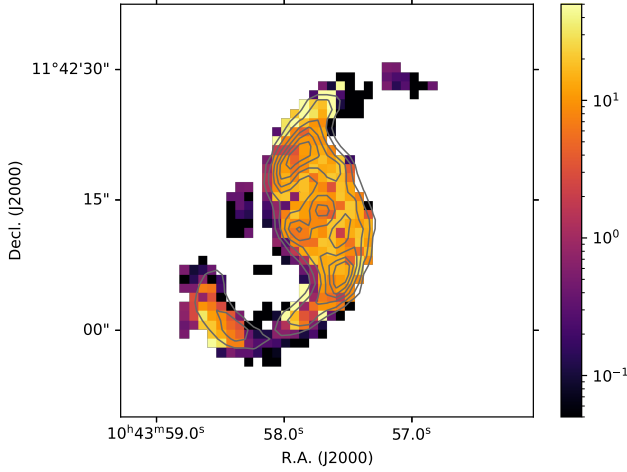


Figure 15. Optical depth (τ) map of CO 1–0 determined from the one-component 1DMax physical conditions. The arm regions have lower optical depths than the center, which may originate from higher velocity dispersions. The optically thin regions with $\tau < 1$ are found to have similar α_{CO} values to those predicted under LTE assumption (Bolatto et al. 2013).

cal depths in the gas inflows. As shown in Figure 15, the optical depths derived from the 1DMax physical conditions are found to be lower in the arms compared to the center, which is likely a combined effect of low N_{CO} and high Δv (see Equation 3). Since higher velocity dispersions and consequently lower optical depths allow a larger fraction of CO emission to escape, these may explain why α_{CO} is low in the inflow arms.

In optically thin regions, the average α_{CO} is $0.04^{+0.13}_{-0.03} \text{ M}_{\odot} (\text{K km s}^{-1} \text{ pc}^2)^{-1}$ based on the marginal-

ized 1DMax α_{CO} map shown in Figure 10a. The optically thin regions were determined by selecting pixels having $\tau < 1$ in Figure 15. Bolatto et al. (2013) derived an LTE equation to determine α_{CO} as a function of the CO/H₂ abundance (x_{CO}) and excitation temperature (T_{ex}):

$$\alpha_{\text{CO}} \approx \frac{1.6 \times 10^{19}}{4.5 \times 10^{19}} \frac{10^{-4}}{x_{\text{CO}}} \frac{T_{\text{ex}}}{30 \text{ K}} \exp \left(\frac{5.53 \text{ K}}{T_{\text{ex}}} - 0.184 \right) \quad (11)$$

where 4.5×10^{19} is the factor to convert $X_{\text{CO}} = N_{\text{H}_2}/I_{\text{CO}(1-0)} \text{ cm}^{-2} (\text{K km s}^{-1})^{-1}$ to α_{CO} (see Equation 10). By plugging our modeled T_k (Figure 8b) and the assumed x_{CO} of 3×10^{-4} into Equation 11, we get an average α_{CO} of $0.12^{+0.16}_{-0.07} \text{ M}_{\odot} (\text{K km s}^{-1} \text{ pc}^2)^{-1}$ in the optically thin regions. This overlaps well with the average derived from our modeled α_{CO} distribution, showing that the solutions from multi-line modeling are physically reasonable. We have also compared the excitation temperatures between CO and ¹³CO predicted by the best-fit physical conditions of the averaged spectra in each region. In the arm regions, the predicted excitation temperatures of CO and ¹³CO 2–1 lines are at 9.0 and 8.8 K, implying that the conditions in the arms are very close to LTE. On the other hand, the excitation temperatures of ¹³CO in the center/ring are lower than those of CO by a factor of ~ 1.5 –2, indicating a clear departure from LTE that may originate from radiative trapping affecting the CO excitation. Radiative trapping lowers the effective critical density for the CO lines, leading to differences in the excitation for CO and ¹³CO. We also note that temperature inhomogeneities in the gas will tend to bias CO lines to higher temperatures since warmer gas has a higher luminosity and, unlike ¹³CO or optically thin tracers, not all CO emission from the full line-of-sight contributes to the measured integrated intensity due to optical depth effects. It is also important to note that our derived values of α_{CO} vary inversely with x_{CO} . Thus, any increase/decrease to the assumed x_{CO} of 3×10^{-4} would lower/raise the numerical values of α_{CO} .

5.3. Comparison with Other CO Isotopologue Transitions

To compare our modeling results with other observations, we also acquired ALMA data of ¹³CO and C¹⁸O 1–0 with an angular resolution of 8'' towards the center of NGC 3351. These data were analyzed in Jiménez-Donaire et al. (2017) and Gallagher et al. (2018). Since the resolution is lower than the matched 2.1'' resolution in our analysis, we only extract regional averages in the center, ring, and arms for comparison. First, we input the integrated intensities measured from the

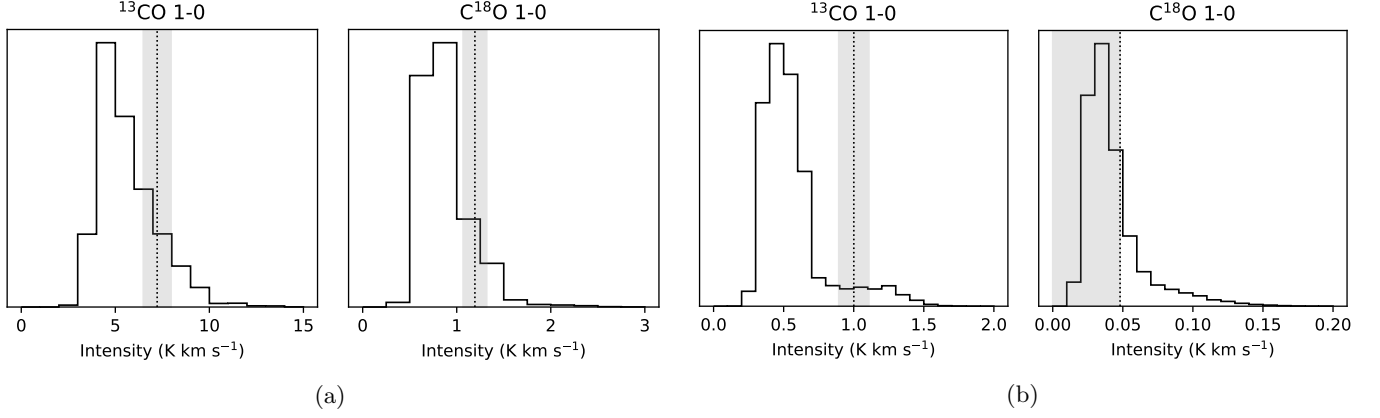


Figure 16. Marginalized 1D likelihoods of the ^{13}CO and C^{18}O 1–0 intensities in the (a) center and (b) arms regions. The dotted lines mark the data measurements and the shaded regions show the $\pm 1\sigma$ uncertainties including the measurement uncertainty and a 10% calibration uncertainty. Since there is no detection of C^{18}O 1–0 in the arms, the dotted line in the far right panel marks the 1σ upper limit. Except for ^{13}CO 1–0 showing a factor of ~ 2 higher intensity than the predicted 1DMax value, the observed intensities of all the lines in other regions are within $\sim 50\%$ of the predicted 1DMax intensities.

stacked spectra of each region (e.g., Figure 4) into the six-line modeling described in Section 4.2. This gives us a full probability grid for each region. Then, we generate the modeled intensity grids of ^{13}CO and C^{18}O 1–0 using RADEX, such that the modeled intensity at each grid point has an associated probability. Finally, we obtain the predicted 1D likelihoods for both lines using the method described in Section 4.4.

Figure 16a shows the predicted 1D likelihoods for the center region, covering an intensity range of 0 to 15 K km s^{-1} in steps of 1 K km s^{-1} for ^{13}CO 1–0 and 0 to 3 K km s^{-1} in steps of 0.25 K km s^{-1} for C^{18}O 1–0. The dotted lines mark measured intensities and the shaded regions show the $\pm 1\sigma$ uncertainties which include the measurement uncertainty and a 10% calibration uncertainty. Following [Schruba et al. \(2011\)](#), we estimate the measurement uncertainties using the signal-free part of the spectra and the fitted line widths. In the center region, both the observed intensities are within $\sim 50\%$ of the predicted 1DMax intensities. The 1D likelihoods and observed intensities for the ring region are similar to those in the center. On the other hand, Figure 16b shows that both the predicted and observed emission in the arms are fainter than the center/ring. For the arms, the 1D likelihoods range from 0 to 2 K km s^{-1} in steps of 0.1 K km s^{-1} for ^{13}CO and 0 to 0.2 K km s^{-1} in steps of 0.01 K km s^{-1} for C^{18}O . As there is no detection of C^{18}O 1–0 in the arms, the dotted line in the right panel of Figure 16b marks the 1σ upper limit, which is also within 50% of the 1DMax intensity. Notably, the observed ^{13}CO 1–0 intensity is a factor of ~ 2 higher than the prediction. This may indicate a more optically-thick CO or a lower $X_{12/13}$ abundance ratio in the arms compared with our modeling results. It could also imply that

the excitation temperatures of ^{13}CO is underestimated in our models.

6. DISCUSSION

Our multi-line modeling, either under the assumption of one- or two-component gas, results in similar distribution of environmental parameters. First, it reveals different physical conditions between the center (i.e., central $\sim 1 \text{ kpc}$) of NGC 3351 and its adjacent inflow arms - the $N_{\text{CO}}/\Delta v \sim 10^{18}/15 \text{ cm}^{-2} (\text{km s}^{-1})^{-1}$ found in the center is much higher than $N_{\text{CO}}/\Delta v \sim 2 \times 10^{16}/15 \text{ cm}^{-2} (\text{km s}^{-1})^{-1}$ in the arms. Second, the temperature is $\sim 30\text{--}60 \text{ K}$ near the nucleus and both contact points, while other regions show lower temperatures of $\sim 10\text{--}20 \text{ K}$ (see Figure 8b). Third, the H_2 volume densities are $\sim 2\text{--}3 \times 10^3 \text{ cm}^{-3}$ across the whole region. The derived temperature and density ranges are consistent with those found in the Milky Way's CMZ ([Longmore et al. 2013](#); [Ginsburg et al. 2016](#); [Krieger et al. 2017](#)). Finally, the arm regions have lower optical depths than the center, which could originate from the broader line widths, shear, and bulk gas flows in the arms. The lower optical depth in the arms allows more CO emission to escape and is possibly the reason why higher CO/ ^{13}CO and CO/ C^{18}O ratios are observed in the arms (see Figure 3d and e). While a high $X_{12/13}$ value can also cause such high line ratios, this may not be the main reason as our modeling of the arm regions with stacking suggests a normal and well-constrained $X_{12/13}$ similar to the center. Observational studies of other barred galaxies have also found significantly higher CO/ ^{13}CO line ratio in their centers and shown that it is more likely to result from the dramatic change in optical depths or line widths than a high $X_{12/13}$ abun-

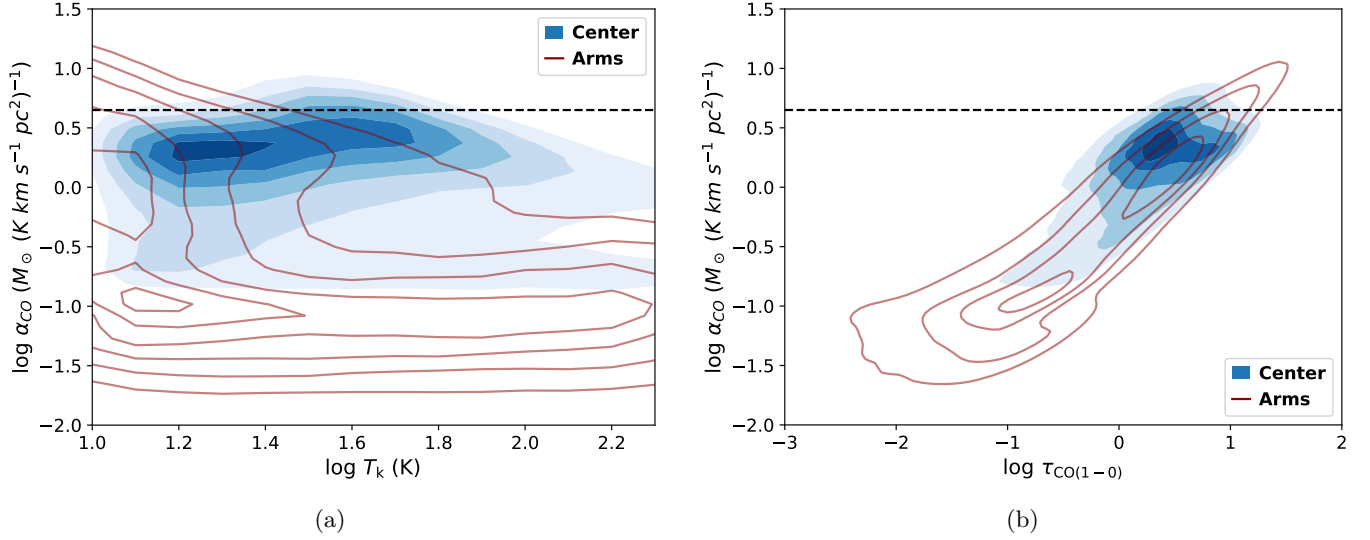


Figure 17. Relation between α_{CO} and (a) T_k or (b) $\tau_{\text{CO}(1-0)}$. The contours show density of points from 1000 likelihood-weighted random draws from the one-component model grids for all pixels in each region. The blue/red contours represent the pixels in the center/arms. The spread in the contours reflects both uncertainties and the relationship between the parameters. The dashed lines mark the Galactic α_{CO} value. There is no clear signs of correlation between α_{CO} and T_k , while α_{CO} and $\tau_{\text{CO}(1-0)}$ potentially shows a positive correlation.

dance (e.g., NGC 3627: Morokuma-Matsui et al. 2015, NGC 7465: Young et al. 2021). In addition, we think that turbulence and/or shear in the inflows is likely the cause of higher velocity dispersion in the arms, which is similar to the shear-driven inflows and turbulence in the CMZ of the Milky Way (e.g. Ginsburg et al. 2016; Kruijssen et al. 2019; Hatchfield et al. 2021).

Based on the one- and two-component models, the derived α_{CO} also differs significantly between the center and the arms. Assuming a x_{CO} of 3×10^{-4} , we find $\alpha_{\text{CO}} \sim 0.5\text{--}2 M_{\odot} (\text{K km s}^{-1} \text{pc}^2)^{-1}$ in the center, which is lower than the Galactic value at $4.4 M_{\odot} (\text{K km s}^{-1} \text{pc}^2)^{-1}$. In the arms, the value of α_{CO} is even found to be approximately an order of magnitude lower than the center. The center and the arms altogether gives an intensity-weighted mean α_{CO} of $\sim 1.5 M_{\odot} (\text{K km s}^{-1} \text{pc}^2)^{-1}$ over the entire observed region of ~ 2 kpc. Using the dust mass surface density derived from infrared SED modeling and lower resolution CO and HI observations, Sandstrom et al. (2013) found a similar α_{CO} value of $1.0^{+0.4}_{-0.3} M_{\odot} (\text{K km s}^{-1} \text{pc}^2)^{-1}$ in the central 1.7 kpc of NGC 3351 at $40''$ scales. Their method assumes that the dust-to-gas ratio is constant across the center and finds the α_{CO} which best reproduces that result by minimizing scatter in dust-to-gas. Since the method used by Sandstrom et al. (2013) is completely independent of the multi-line modeling we use, the fact that both methods reach a similar α_{CO} value gives us more confidence in both results.

With the results of environmental conditions and α_{CO} summarized above, we conclude that the low α_{CO} in the central few kpc of NGC 3351 results from a combination of two factors. First, the central ring/nucleus has a slightly lower-than-Galactic α_{CO} . Secondly, the inflow arms have a substantially lower α_{CO} , because they consist mainly of optically-thin gas. Sun et al. (2018, 2020) have analyzed cloud-scale molecular gas properties in nearby galaxy samples and clearly showed the increase of velocity dispersion and turbulent pressure toward barred galaxy centers. For the centers of barred galaxies, they reported a mass-weighted velocity dispersion that is ~ 5 times higher than the disk regions. This could be the cause for the $\sim 2\text{--}9$ times lower-than-Galactic α_{CO} in the central ~ 1 kpc of NGC 3351, as the Galactic α_{CO} value was based on molecular cloud measurements in the disk of the Milky Way.

Nevertheless, it is also possible given a different x_{CO} , that the central ~ 1 kpc of NGC 3351 has a Galactic α_{CO} , so that the significantly lower α_{CO} from the arms would become the main reason for a lower-than-Galactic α_{CO} observed over the central few kpc region. As mentioned in Section 5, the assumed x_{CO} value of 3×10^{-4} is appropriate for starburst regions, and thus it is higher than the common assumption of $\sim 10^{-4}$. If x_{CO} is in fact a factor of two or three lower than our assumption in the center, the derived value of α_{CO} would increase linearly and lead to a nearly-Galactic α_{CO} in this region. This resulting situation of a nearly-Galactic α_{CO} in the center and a significantly lower α_{CO} in the inflow arms would

then be similar to that found in Papadopoulos et al. (2012a) and Leroy et al. (2015), where they reported a nearly-Galactic α_{CO} for GMCs and a much lower α_{CO} value for non-GMC associated gas.

Many explanations for low α_{CO} values have been proposed in the literature. From a theoretical perspective, Bolatto et al. (2013) have shown that enhanced temperatures may lead to lower α_{CO} for isolated and virialized GMCs. The magnetohydrodynamics simulation conducted by Gong et al. (2020) also showed that α_{CO} decreases with increasing heating from cosmic ray ionization. On the other hand, Papadopoulos et al. (2012a) showed the dependence of α_{CO} on optical depths for thermalized, optically thick emission. In such a case, α_{CO} is expected to be approximately proportional to $\tau/[1 - \exp(-\tau)]$ if the excitation temperature is kept constant. To understand if the α_{CO} variations in the galaxy center of NGC 3351 are more related to increased temperature or to decreased optical depth, we investigate the correlation between the inferred α_{CO} and the kinetic temperatures or CO optical depths derived from the one-component modeling. For each pixel in the center and arms, we conduct 1000 likelihood-weighted random draws from the 6D full grids of the predicted T_k , $\tau_{\text{CO}(1-0)}$ and α_{CO} . Figure 17 shows the density of the points from the random draw. The spread of these points reflects both the parameter uncertainties and the overall relationship between α_{CO} and T_k or $\tau_{\text{CO}(1-0)}$. In Figure 17a, the center region spans a wide range in T_k and shows a roughly constant α_{CO} value. For the arms, there are two distinct regions with a higher or lower α_{CO} values, while the low- α_{CO} region extending to the highest temperatures indicates large T_k uncertainties in these pixels. Thus, we do not see clear correlation between α_{CO} and T_k in either the center or the arm regions. In contrast, Figure 17b clearly shows that α_{CO} and $\tau_{\text{CO}(1-0)}$ are more correlated, with both the center and arm regions spanning a range in optical depths and α_{CO} . The distribution in Figure 17b suggests a positive correlation that is consistent with the thermalized α_{CO} expression in Papadopoulos et al. (2012a), where α_{CO} is expected to increase linearly with τ at $\tau \gg 1$ but barely rise at $\tau \ll 1$ if T_{ex} is constant. Furthermore, the data points from the center and arms are aligned in the $\alpha_{\text{CO}}\text{-}\tau_{\text{CO}(1-0)}$ parameter space, showing a continuous transition between the optically-thin and optically-thick regimes.

7. CONCLUSION

We present ALMA observations of multiple CO, ^{13}CO , and C^{18}O rotational lines at ~ 100 pc resolution toward the central ~ 2 kpc region of NGC 3351. We

constrain the distributions of multiple environmental parameters using multi-line radiative transfer modeling and a Bayesian likelihood analysis along each sight line. With the probability distribution of physical parameters at each pixel, we derive the spatial variation of α_{CO} . We construct models with a one-component or two-component assumption on gas phases and compare the results. To recover faint emission from the inflow arms, we also conduct spectral stacking and compare with the pixel-based analysis. Our main results are summarized as follows:

1. All of the CO, ^{13}CO , and C^{18}O images resolve a compact nucleus at the galaxy center, a circumnuclear ring of star formation in the central ~ 1 kpc, and an emission-faint gap region in between. Except for C^{18}O 3–2, the images reveal two bar-driven inflow arms connected to the northern and southern part of the ring (i.e., contact points). The emission is brightest in all the lines at both contact points.
2. The 1DMax solutions from multi-line modeling show no clear variation in CO isotopologue abundance ratios. In the central ~ 1 kpc, we find $X_{12/13} \sim 20\text{--}30$ and $X_{13/18} \sim 6\text{--}10$, which are consistent with the values of the Galactic Center. However, we note that $X_{12/13}$ is the least well-constrained property with a broad 1D likelihood distribution in each pixel.
3. Both the one- and two-component modeling results suggest a dominant gas phase with $n_{\text{H}_2} \sim 2\text{--}3 \times 10^3 \text{ cm}^{-3}$ in the center and a higher T_k of $\sim 30\text{--}60$ K near the nucleus and contact points than in the rest of the regions. This density and temperature are consistent with those found in the Milky Way’s Central Molecular Zone at pc resolutions.
4. The derived α_{CO} distributions based on the one- and two-component models reveal similar spatial variations: in the central $20''$ (~ 1 kpc), $\alpha_{\text{CO}} \sim 0.5\text{--}2$ ($3 \times 10^{-4}/x_{\text{CO}}$) $\text{M}_{\odot} (\text{K km s}^{-1} \text{ pc}^2)^{-1}$, which is a factor of 2–9 lower than the Galactic value, and it slowly decreases with increasing galactocentric radius; on the other hand, a substantially lower α_{CO} value of $\lesssim 0.1$ ($3 \times 10^{-4}/x_{\text{CO}}$) $\text{M}_{\odot} (\text{K km s}^{-1} \text{ pc}^2)^{-1}$ is found in the inflow arms. We also derive similarly low α_{CO} values from a stacking analysis in the arms and using the LTE expression for α_{CO} in optically thin regions.

5. The substantially lower α_{CO} in the arms can be explained by lower optical depths which implies a higher escape probability for CO emission. The significantly higher CO/ ^{13}CO and CO/ C^{18}O 2–1 ratios in the arms support this scenario, and the large velocity dispersions observed in the arms, likely due to turbulence or shear in the inflows, may be the reason behind such low optical depths.
6. The α_{CO} in the center/ring does not show correlation with temperature. The lower-than-Galactic α_{CO} in this region may be due to higher velocity dispersions in barred galaxy centers than in the disk of the Milky Way. Nevertheless, if our assumption of $x_{\text{CO}} \sim 3 \times 10^{-4}$ is a factor of few higher than reality, the α_{CO} in the center/ring could have nearly Galactic α_{CO} .
7. We derive an intensity-weighted mean α_{CO} of 1.79 ± 0.10 and 1.11 ± 0.09 ($3 \times 10^{-4}/x_{\text{CO}}$) $\text{M}_{\odot} (\text{K km s}^{-1} \text{ pc}^2)^{-1}$ over the observed ~ 2 kpc region, based on one- and two-component models, respectively. This result is a combination of the central ~ 1 kpc region with a slightly lower-than-Galactic α_{CO} and the inflow arm regions with a significantly lower α_{CO} . The derived values of the overall α_{CO} are similar to that determined by Sandstrom et al. (2013) using dust modeling at kpc scales.

Overall, our results suggest that dynamical effects and non-GMC associated gas can be important factors that cause α_{CO} variations. In the inflow arms of NGC 3351, α_{CO} is approximately an order of magnitude lower than in the center, possibly due to molecular gas with low optical depths resulting from broader line widths. Therefore, when using CO to trace molecular gas in galaxies with dynamical features that drive inflows (e.g., bars, ovals, interactions, mergers), it is important to account for α_{CO} variations originating from changes in the velocity dispersion and therefore optical depth in specific regions.

ACKNOWLEDGMENTS

We thank the referee for helpful comments that improved the manuscript. Y.-H.T. thanks I.-D. Chiang and J. Chastenet for helpful discussion at group meetings. Y.-H.T. and K.S. acknowledge funding support from NRAO Student Observing Support Grant SOSPADA-012 and from the National Science Foundation (NSF) under grant No. 2108081. The work of J.S. and A.K.L. is partially supported by the National Science Foundation (NSF) under Grants No. 1615105, 1615109, and 1653300. A.D.B. acknowledges partial support from grant NSF-AST210814. J.M.D.K. gratefully acknowledges funding from the Deutsche Forschungsgemeinschaft (DFG, German Research Foundation) through an Emmy Noether Research Group (grant number KR4801/1-1) and the DFG Sachbeihilfe (grant number KR4801/2-1), as well as from the European Research Council (ERC) under the European Union’s Horizon 2020 research and innovation programme via the ERC Starting Grant MUSTANG (grant agreement number 714907). A.U. acknowledges support from the Spanish funding grants PGC2018-094671-B-I00 (MCIU/AEI/FEDER) and PID2019-108765GB-I00 (MICINN). A.T.B. and F.B. acknowledge funding from the European Research Council (ERC) under the European Union’s Horizon 2020 research and innovation programme (grant agreement No. 726384/Empire). E.R. acknowledges the support of the Natural Sciences and Engineering Research Council of Canada (NSERC), funding reference number RGPIN-2017-03987.

This paper makes use of the following ALMA data: ADS/JAO.ALMA#2013.1.00634.S, ADS/JAO.ALMA#2013.1.00885.S, ADS/JAO.ALMA#2015.1.00956.S, ADS/JAO.ALMA#2016.1.00972.S.

ALMA is a partnership of ESO (representing its member states), NSF (USA), and NINS (Japan), together with NRC (Canada), NSC and ASIAA (Taiwan), and KASI (Republic of Korea), in cooperation with the Republic of Chile. The Joint ALMA Observatory is operated by ESO, AUI/NRAO, and NAOJ. The National Radio Astronomy Observatory is a facility of the National Science Foundation operated under cooperative agreement by Associated Universities, Inc.

We acknowledge the usage of NASA’s Astrophysics Data System (<http://www.adsabs.harvard.edu>) and ds9, a tool for data visualization supported by the Chandra X-ray Science Center (CXC) and the High Energy Astrophysics Science Archive Center (HEASARC) with support from the JWST Mission office at the Space Telescope Science Institute for 3D visualization.

Facilities: ALMA

Software: CASA (McMullin et al. 2007), ds9 (Smithsonian Astrophysical Observatory 2000; Joye & Mandel

2003), matplotlib (Hunter 2007), numpy (Harris et al. 2020), scipy (Virtanen et al. 2020), astropy (Astropy Collaboration et al. 2013, 2018), RADEX (van der Tak et al. 2007), corner (Foreman-Mackey 2016) spectral-cube (Ginsburg et al. 2019)

REFERENCES

- Abdo, A. A., Ackermann, M., Ajello, M., et al. 2010, ApJ, 710, 133, doi: [10.1088/0004-637X/710/1/133](https://doi.org/10.1088/0004-637X/710/1/133)
- Accurso, G., Saintonge, A., Catinella, B., et al. 2017, MNRAS, 470, 4750, doi: [10.1093/mnras/stx1556](https://doi.org/10.1093/mnras/stx1556)
- Ackermann, M., Ajello, M., Allafort, A., et al. 2012a, A&A, 538, A71, doi: [10.1051/0004-6361/201117539](https://doi.org/10.1051/0004-6361/201117539)
- Ackermann, M., Ajello, M., Atwood, W. B., et al. 2012b, ApJ, 750, 3, doi: [10.1088/0004-637X/750/1/3](https://doi.org/10.1088/0004-637X/750/1/3)
- Alloin, D., & Nieto, J. L. 1982, A&AS, 50, 491
- Anand, G. S., Lee, J. C., Van Dyk, S. D., et al. 2021, MNRAS, 501, 3621, doi: [10.1093/mnras/staa3668](https://doi.org/10.1093/mnras/staa3668)
- Areal, M. B., Paron, S., Celis Peña, M., & Ortega, M. E. 2018, A&A, 612, A117, doi: [10.1051/0004-6361/201732067](https://doi.org/10.1051/0004-6361/201732067)
- Astropy Collaboration, Robitaille, T. P., Tollerud, E. J., et al. 2013, A&A, 558, A33, doi: [10.1051/0004-6361/201322068](https://doi.org/10.1051/0004-6361/201322068)
- Astropy Collaboration, Price-Whelan, A. M., Sipőcz, B. M., et al. 2018, AJ, 156, 123, doi: [10.3847/1538-3881/aabc4f](https://doi.org/10.3847/1538-3881/aabc4f)
- Barnes, A. T., Longmore, S. N., Battersby, C., et al. 2017, MNRAS, 469, 2263, doi: [10.1093/mnras/stx941](https://doi.org/10.1093/mnras/stx941)
- Barnes, A. T., Kauffmann, J., Bigiel, F., et al. 2020, MNRAS, 497, 1972, doi: [10.1093/mnras/staa1814](https://doi.org/10.1093/mnras/staa1814)
- Bigiel, F., de Looze, I., Krabbe, A., et al. 2020, ApJ, 903, 30, doi: [10.3847/1538-4357/abb677](https://doi.org/10.3847/1538-4357/abb677)
- Bisbas, T. G., Schrubba, A., & van Dishoeck, E. F. 2019, MNRAS, 485, 3097, doi: [10.1093/mnras/stz405](https://doi.org/10.1093/mnras/stz405)
- Black, J. H., van Dishoeck, E. F., Willner, S. P., & Woods, R. C. 1990, ApJ, 358, 459, doi: [10.1086/168999](https://doi.org/10.1086/168999)
- Blanc, G. A., Schrubba, A., Evans, Neal J., I., et al. 2013, ApJ, 764, 117, doi: [10.1088/0004-637X/764/2/117](https://doi.org/10.1088/0004-637X/764/2/117)
- Blitz, L., Bloemen, J. B. G. M., Hermsen, W., & Bania, T. M. 1985, A&A, 143, 267
- Bolatto, A. D., Leroy, A. K., Rosolowsky, E., Walter, F., & Blitz, L. 2008, ApJ, 686, 948, doi: [10.1086/591513](https://doi.org/10.1086/591513)
- Bolatto, A. D., Wolfire, M., & Leroy, A. K. 2013, ARA&A, 51, 207, doi: [10.1146/annurev-astro-082812-140944](https://doi.org/10.1146/annurev-astro-082812-140944)
- Bonato, M., Liuzzo, E., Giannetti, A., et al. 2018, MNRAS, 478, 1512, doi: [10.1093/mnras/sty1173](https://doi.org/10.1093/mnras/sty1173)
- Bonato, M., Liuzzo, E., Herranz, D., et al. 2019, MNRAS, 485, 1188, doi: [10.1093/mnras/stz465](https://doi.org/10.1093/mnras/stz465)
- Callanan, D., Longmore, S. N., Kruijssen, J. M. D., et al. 2021, MNRAS, 505, 4310, doi: [10.1093/mnras/stab1527](https://doi.org/10.1093/mnras/stab1527)
- Calzetti, D., Battisti, A. J., Shivaee, I., et al. 2021, ApJ, 913, 37, doi: [10.3847/1538-4357/abf118](https://doi.org/10.3847/1538-4357/abf118)
- Colina, L., García Vargas, M. L., Mas-Hesse, J. M., Alberdi, A., & Krabbe, A. 1997, ApJL, 484, L41, doi: [10.1086/310766](https://doi.org/10.1086/310766)
- Cormier, D., Bigiel, F., Jiménez-Donaire, M. J., et al. 2018, MNRAS, 475, 3909, doi: [10.1093/mnras/sty059](https://doi.org/10.1093/mnras/sty059)
- Davies, R. I., Müller Sánchez, F., Genzel, R., et al. 2007, ApJ, 671, 1388, doi: [10.1086/523032](https://doi.org/10.1086/523032)
- den Brok, J. S., Chatzigiannakis, D., Bigiel, F., et al. 2021, MNRAS, 504, 3221, doi: [10.1093/mnras/stab859](https://doi.org/10.1093/mnras/stab859)
- Dickman, R. L., Snell, R. L., & Schloerb, F. P. 1986, ApJ, 309, 326, doi: [10.1086/164604](https://doi.org/10.1086/164604)
- Donovan Meyer, J., Koda, J., Momose, R., et al. 2013, ApJ, 772, 107, doi: [10.1088/0004-637X/772/2/107](https://doi.org/10.1088/0004-637X/772/2/107)
- Downes, D., & Solomon, P. M. 1998, ApJ, 507, 615, doi: [10.1086/306339](https://doi.org/10.1086/306339)
- Eckart, A., Downes, D., Genzel, R., et al. 1990, ApJ, 348, 434, doi: [10.1086/168252](https://doi.org/10.1086/168252)
- Elmegreen, D. M., Chromey, F. R., Santos, M., & Marshall, D. 1997, AJ, 114, 1850, doi: [10.1086/118610](https://doi.org/10.1086/118610)
- Feldmann, R., Gnedin, N. Y., & Kravtsov, A. V. 2012, ApJ, 747, 124, doi: [10.1088/0004-637X/747/2/124](https://doi.org/10.1088/0004-637X/747/2/124)
- Foreman-Mackey, D. 2016, Journal of Open Source Software, 1, 24, doi: [10.21105/joss.00024](https://doi.org/10.21105/joss.00024)
- Frerking, M. A., Langer, W. D., & Wilson, R. W. 1982, ApJ, 262, 590, doi: [10.1086/160451](https://doi.org/10.1086/160451)
- Gadotti, D. A., Sánchez-Blázquez, P., Falcón-Barroso, J., et al. 2019, MNRAS, 482, 506, doi: [10.1093/mnras/sty2666](https://doi.org/10.1093/mnras/sty2666)
- Gallagher, M. J., Leroy, A. K., Bigiel, F., et al. 2018, ApJ, 858, 90, doi: [10.3847/1538-4357/aabad8](https://doi.org/10.3847/1538-4357/aabad8)
- Ginsburg, A., Henkel, C., Ao, Y., et al. 2016, A&A, 586, A50, doi: [10.1051/0004-6361/201526100](https://doi.org/10.1051/0004-6361/201526100)
- Ginsburg, A., Koch, E., Robitaille, T., et al. 2019, radio-astro-tools/spectral-cube: Release v0.4.5, v0.4.5, Zenodo, doi: [10.5281/zenodo.3558614](https://doi.org/10.5281/zenodo.3558614)
- Gong, M., Ostriker, E. C., Kim, C.-G., & Kim, J.-G. 2020, ApJ, 903, 142, doi: [10.3847/1538-4357/abbdab](https://doi.org/10.3847/1538-4357/abbdab)

- Gordon, K. D., Roman-Duval, J., Bot, C., et al. 2014, *ApJ*, 797, 85, doi: [10.1088/0004-637X/797/2/85](https://doi.org/10.1088/0004-637X/797/2/85)
- Goulding, A. D., & Alexander, D. M. 2009, *MNRAS*, 398, 1165, doi: [10.1111/j.1365-2966.2009.15194.x](https://doi.org/10.1111/j.1365-2966.2009.15194.x)
- Grier, C. J., Mathur, S., Ghosh, H., & Ferrarese, L. 2011, *ApJ*, 731, 60, doi: [10.1088/0004-637X/731/1/60](https://doi.org/10.1088/0004-637X/731/1/60)
- Hägele, G. F., Díaz, Á. I., Cardaci, M. V., Terlevich, E., & Terlevich, R. 2007, *MNRAS*, 378, 163, doi: [10.1111/j.1365-2966.2007.11751.x](https://doi.org/10.1111/j.1365-2966.2007.11751.x)
- Harris, C. R., Millman, K. J., van der Walt, S. J., et al. 2020, *Nature*, 585, 357, doi: [10.1038/s41586-020-2649-2](https://doi.org/10.1038/s41586-020-2649-2)
- Hatchfield, H. P., Sormani, M. C., Tress, R. G., et al. 2021, arXiv e-prints, arXiv:2106.08461, <https://arxiv.org/abs/2106.08461>
- Helfer, T. T., & Blitz, L. 1995, *ApJ*, 450, 90, doi: [10.1086/176122](https://doi.org/10.1086/176122)
- Heyer, M., & Dame, T. M. 2015, *ARA&A*, 53, 583, doi: [10.1146/annurev-astro-082214-122324](https://doi.org/10.1146/annurev-astro-082214-122324)
- Heyer, M. H., Carpenter, J. M., & Snell, R. L. 2001, *ApJ*, 551, 852, doi: [10.1086/320218](https://doi.org/10.1086/320218)
- Huettmeister, S., Wilson, T. L., Bania, T. M., & Martin-Pintado, J. 1993, *A&A*, 280, 255
- Hunter, J. D. 2007, *Computing In Science & Engineering*, 9, 90
- Imanishi, M., Nakanishi, K., & Izumi, T. 2018, *ApJ*, 856, 143, doi: [10.3847/1538-4357/aab42f](https://doi.org/10.3847/1538-4357/aab42f)
- Imara, N. 2015, *ApJ*, 803, 38, doi: [10.1088/0004-637X/803/1/38](https://doi.org/10.1088/0004-637X/803/1/38)
- Israel, F. P. 2009, *A&A*, 506, 689, doi: [10.1051/0004-6361/200811586](https://doi.org/10.1051/0004-6361/200811586)
- . 2020, *A&A*, 635, A131, doi: [10.1051/0004-6361/201834198](https://doi.org/10.1051/0004-6361/201834198)
- Jiménez-Donaire, M. J., Cormier, D., Bigiel, F., et al. 2017, *ApJL*, 836, L29, doi: [10.3847/2041-8213/836/2/L29](https://doi.org/10.3847/2041-8213/836/2/L29)
- Joye, W. A., & Mandel, E. 2003, in *Astronomical Society of the Pacific Conference Series*, Vol. 295, *Astronomical Data Analysis Software and Systems XII*, ed. H. E. Payne, R. I. Jedrzejewski, & R. N. Hook, 489
- Kamenetzky, J., Rangwala, N., Glenn, J., Maloney, P. R., & Conley, A. 2014, *ApJ*, 795, 174, doi: [10.1088/0004-637X/795/2/174](https://doi.org/10.1088/0004-637X/795/2/174)
- Kamenetzky, J., Glenn, J., Rangwala, N., et al. 2012, *ApJ*, 753, 70, doi: [10.1088/0004-637X/753/1/70](https://doi.org/10.1088/0004-637X/753/1/70)
- Kennicutt, R. C., & Evans, N. J. 2012, *ARA&A*, 50, 531, doi: [10.1146/annurev-astro-081811-125610](https://doi.org/10.1146/annurev-astro-081811-125610)
- König, S., Aalto, S., Müller, S., et al. 2016, *A&A*, 594, A70, doi: [10.1051/0004-6361/201628535](https://doi.org/10.1051/0004-6361/201628535)
- Krieger, N., Ott, J., Beuther, H., et al. 2017, *ApJ*, 850, 77, doi: [10.3847/1538-4357/aa951c](https://doi.org/10.3847/1538-4357/aa951c)
- Kruijssen, J. M. D., Dale, J. E., Longmore, S. N., et al. 2019, *MNRAS*, 484, 5734, doi: [10.1093/mnras/stz381](https://doi.org/10.1093/mnras/stz381)
- Lacy, J. H., Knacke, R., Geballe, T. R., & Tokunaga, A. T. 1994, *ApJL*, 428, L69, doi: [10.1086/187395](https://doi.org/10.1086/187395)
- Lang, P., Meidt, S. E., Rosolowsky, E., et al. 2020, *ApJ*, 897, 122, doi: [10.3847/1538-4357/ab9953](https://doi.org/10.3847/1538-4357/ab9953)
- Langer, W. D., & Penzias, A. A. 1990, *ApJ*, 357, 477, doi: [10.1086/168935](https://doi.org/10.1086/168935)
- Leaman, R., Fragkoudi, F., Querejeta, M., et al. 2019, *MNRAS*, 488, 3904, doi: [10.1093/mnras/stz1844](https://doi.org/10.1093/mnras/stz1844)
- Leroy, A. K., Walter, F., Bigiel, F., et al. 2009, *AJ*, 137, 4670, doi: [10.1088/0004-6256/137/6/4670](https://doi.org/10.1088/0004-6256/137/6/4670)
- Leroy, A. K., Bolatto, A., Gordon, K., et al. 2011, *ApJ*, 737, 12, doi: [10.1088/0004-637X/737/1/12](https://doi.org/10.1088/0004-637X/737/1/12)
- Leroy, A. K., Bolatto, A. D., Ostriker, E. C., et al. 2015, *ApJ*, 801, 25, doi: [10.1088/0004-637X/801/1/25](https://doi.org/10.1088/0004-637X/801/1/25)
- Leroy, A. K., Usero, A., Schrubba, A., et al. 2017, *ApJ*, 835, 217, doi: [10.3847/1538-4357/835/2/217](https://doi.org/10.3847/1538-4357/835/2/217)
- Leroy, A. K., Schinnerer, E., Hughes, A., et al. 2021a, arXiv e-prints, arXiv:2104.07739, <https://arxiv.org/abs/2104.07739>
- Leroy, A. K., Hughes, A., Liu, D., et al. 2021b, *ApJS*, 255, 19, doi: [10.3847/1538-4365/abec80](https://doi.org/10.3847/1538-4365/abec80)
- Lin, M.-Y., Davies, R. I., Hicks, E. K. S., et al. 2018, *MNRAS*, 473, 4582, doi: [10.1093/mnras/stx2618](https://doi.org/10.1093/mnras/stx2618)
- Linden, S. T., Murphy, E. J., Dong, D., et al. 2020, *ApJS*, 248, 25, doi: [10.3847/1538-4365/ab8a4d](https://doi.org/10.3847/1538-4365/ab8a4d)
- Liu, D., Gao, Y., Isaak, K., et al. 2015, *ApJL*, 810, L14, doi: [10.1088/2041-8205/810/2/L14](https://doi.org/10.1088/2041-8205/810/2/L14)
- Liu, D., Daddi, E., Schinnerer, E., et al. 2021, *ApJ*, 909, 56, doi: [10.3847/1538-4357/abd801](https://doi.org/10.3847/1538-4357/abd801)
- Longmore, S. N., Bally, J., Testi, L., et al. 2013, *MNRAS*, 429, 987, doi: [10.1093/mnras/sts376](https://doi.org/10.1093/mnras/sts376)
- Madden, S. C., Cormier, D., Honig, S., et al. 2020, *A&A*, 643, A141, doi: [10.1051/0004-6361/202038860](https://doi.org/10.1051/0004-6361/202038860)
- McMullin, J. P., Waters, B., Schiebel, D., Young, W., & Golap, K. 2007, in *Astronomical Society of the Pacific Conference Series*, Vol. 376, *Astronomical Data Analysis Software and Systems XVI*, ed. R. A. Shaw, F. Hill, & D. J. Bell, 127
- Meier, D. S., & Turner, J. L. 2004, *AJ*, 127, 2069, doi: [10.1086/382904](https://doi.org/10.1086/382904)
- Milam, S. N., Savage, C., Brewster, M. A., Ziurys, L. M., & Wyckoff, S. 2005, *ApJ*, 634, 1126, doi: [10.1086/497123](https://doi.org/10.1086/497123)
- Morokuma-Matsui, K., Sorai, K., Watanabe, Y., & Kuno, N. 2015, *PASJ*, 67, 2, doi: [10.1093/pasj/psu126](https://doi.org/10.1093/pasj/psu126)
- Moustakas, J., Kennicutt, Robert C., J., Tremonti, C. A., et al. 2010, *ApJS*, 190, 233, doi: [10.1088/0067-0049/190/2/233](https://doi.org/10.1088/0067-0049/190/2/233)

- Narayanan, D., Krumholz, M. R., Ostriker, E. C., & Hernquist, L. 2012, MNRAS, 421, 3127, doi: [10.1111/j.1365-2966.2012.20536.x](https://doi.org/10.1111/j.1365-2966.2012.20536.x)
- Oka, T., Hasegawa, T., Sato, F., et al. 2001, ApJ, 562, 348, doi: [10.1086/322976](https://doi.org/10.1086/322976)
- Osterbrock, D. E., & Ferland, G. J. 2006, Astrophysics of gaseous nebulae and active galactic nuclei (University Science Books)
- Papadopoulos, P. P., Bisbas, T. G., & Zhang, Z.-Y. 2018, MNRAS, 478, 1716, doi: [10.1093/mnras/sty1077](https://doi.org/10.1093/mnras/sty1077)
- Papadopoulos, P. P., van der Werf, P., Xilouris, E., Isaak, K. G., & Gao, Y. 2012a, ApJ, 751, 10, doi: [10.1088/0004-637X/751/1/10](https://doi.org/10.1088/0004-637X/751/1/10)
- Papadopoulos, P. P., van der Werf, P. P., Xilouris, E. M., et al. 2012b, MNRAS, 426, 2601, doi: [10.1111/j.1365-2966.2012.21001.x](https://doi.org/10.1111/j.1365-2966.2012.21001.x)
- Pineda, J. E., Caselli, P., & Goodman, A. A. 2008, ApJ, 679, 481, doi: [10.1086/586883](https://doi.org/10.1086/586883)
- Planck Collaboration, Ade, P. A. R., Aghanim, N., et al. 2011, A&A, 536, A19, doi: [10.1051/0004-6361/201116479](https://doi.org/10.1051/0004-6361/201116479)
- Planesas, P., Colina, L., & Perez-Olea, D. 1997, A&A, 325, 81
- Remy, Q., Grenier, I. A., Marshall, D. J., & Casandjian, J. M. 2017, A&A, 601, A78, doi: [10.1051/0004-6361/201629632](https://doi.org/10.1051/0004-6361/201629632)
- Sandstrom, K. M., Leroy, A. K., Walter, F., et al. 2013, ApJ, 777, 5, doi: [10.1088/0004-637X/777/1/5](https://doi.org/10.1088/0004-637X/777/1/5)
- Schirm, M. R. P., Wilson, C. D., Parkin, T. J., et al. 2014, ApJ, 781, 101, doi: [10.1088/0004-637X/781/2/101](https://doi.org/10.1088/0004-637X/781/2/101)
- Schöier, F. L., van der Tak, F. F. S., van Dishoeck, E. F., & Black, J. H. 2005, A&A, 432, 369, doi: [10.1051/0004-6361:20041729](https://doi.org/10.1051/0004-6361:20041729)
- Schruba, A., Leroy, A. K., Walter, F., et al. 2011, AJ, 142, 37, doi: [10.1088/0004-6256/142/2/37](https://doi.org/10.1088/0004-6256/142/2/37)
- . 2012, AJ, 143, 138, doi: [10.1088/0004-6256/143/6/138](https://doi.org/10.1088/0004-6256/143/6/138)
- Scoville, N. Z., Yun, M. S., Clemens, D. P., Sanders, D. B., & Waller, W. H. 1987, ApJS, 63, 821, doi: [10.1086/191185](https://doi.org/10.1086/191185)
- Shimajiri, Y., Kitamura, Y., Saito, M., et al. 2014, A&A, 564, A68, doi: [10.1051/0004-6361/201322912](https://doi.org/10.1051/0004-6361/201322912)
- Shirley, Y. L. 2015, PASP, 127, 299, doi: [10.1086/680342](https://doi.org/10.1086/680342)
- Sliwa, K., Wilson, C. D., Iono, D., Peck, A., & Matsushita, S. 2014, ApJL, 796, L15, doi: [10.1088/2041-8205/796/1/L15](https://doi.org/10.1088/2041-8205/796/1/L15)
- Sliwa, K., Wilson, C. D., Matsushita, S., et al. 2017, ApJ, 840, 8, doi: [10.3847/1538-4357/aa689b](https://doi.org/10.3847/1538-4357/aa689b)
- Sliwa, K., Wilson, C. D., Petitpas, G. R., et al. 2012, ApJ, 753, 46, doi: [10.1088/0004-637X/753/1/46](https://doi.org/10.1088/0004-637X/753/1/46)
- Smithsonian Astrophysical Observatory. 2000, SAOImage DS9: A utility for displaying astronomical images in the X11 window environment. <http://ascl.net/0003.002>
- Sobolev, V. V. 1960, Moving envelopes of stars (Harvard University Press)
- Sodroski, T. J., Odegard, N., Dwek, E., et al. 1995, ApJ, 452, 262, doi: [10.1086/176297](https://doi.org/10.1086/176297)
- Solomon, P. M., Rivolo, A. R., Barrett, J., & Yahil, A. 1987, ApJ, 319, 730, doi: [10.1086/165493](https://doi.org/10.1086/165493)
- Sun, J., Leroy, A. K., Schruba, A., et al. 2018, ApJ, 860, 172, doi: [10.3847/1538-4357/aac326](https://doi.org/10.3847/1538-4357/aac326)
- Sun, J., Leroy, A. K., Schinnerer, E., et al. 2020, ApJL, 901, L8, doi: [10.3847/2041-8213/abb3be](https://doi.org/10.3847/2041-8213/abb3be)
- Tan, Q.-H., Gao, Y., Zhang, Z.-Y., & Xia, X.-Y. 2011, Research in Astronomy and Astrophysics, 11, 787, doi: [10.1088/1674-4527/11/7/005](https://doi.org/10.1088/1674-4527/11/7/005)
- Teng, Y.-H., & Hirano, N. 2020, ApJ, 893, 63, doi: [10.3847/1538-4357/ab7cca](https://doi.org/10.3847/1538-4357/ab7cca)
- Togi, A., & Smith, J. D. T. 2016, ApJ, 830, 18, doi: [10.3847/0004-637X/830/1/18](https://doi.org/10.3847/0004-637X/830/1/18)
- Topal, S., Bayet, E., Bureau, M., Davis, T. A., & Walsh, W. 2014, MNRAS, 437, 1434, doi: [10.1093/mnras/stt1976](https://doi.org/10.1093/mnras/stt1976)
- Tunnard, R., & Greve, T. R. 2016, ApJ, 819, 161, doi: [10.3847/0004-637X/819/2/161](https://doi.org/10.3847/0004-637X/819/2/161)
- van der Tak, F. F. S., Black, J. H., Schöier, F. L., Jansen, D. J., & van Dishoeck, E. F. 2007, A&A, 468, 627, doi: [10.1051/0004-6361:20066820](https://doi.org/10.1051/0004-6361:20066820)
- Virtanen, P., Gommers, R., Oliphant, T. E., et al. 2020, Nature Methods, 17, 261, doi: <https://doi.org/https://doi.org/10.1038/s41592-019-0686-2>
- Ward, J. S., Zmuidzinas, J., Harris, A. I., & Isaak, K. G. 2003, ApJ, 587, 171, doi: [10.1086/368175](https://doi.org/10.1086/368175)
- Watanabe, Y., Sorai, K., Kuno, N., & Habe, A. 2011, MNRAS, 411, 1409, doi: [10.1111/j.1365-2966.2010.17746.x](https://doi.org/10.1111/j.1365-2966.2010.17746.x)
- Wilson, T. L., & Rood, R. 1994, ARA&A, 32, 191, doi: [10.1146/annurev.aa.32.090194.001203](https://doi.org/10.1146/annurev.aa.32.090194.001203)
- Wolfire, M. G., Hollenbach, D., & McKee, C. F. 2010, ApJ, 716, 1191, doi: [10.1088/0004-637X/716/2/1191](https://doi.org/10.1088/0004-637X/716/2/1191)
- Wouterloot, J. G. A., Henkel, C., Brand, J., & Davis, G. R. 2008, A&A, 487, 237, doi: [10.1051/0004-6361:20078156](https://doi.org/10.1051/0004-6361:20078156)
- Yajima, Y., Sorai, K., Miyamoto, Y., et al. 2021, PASJ, 73, 257, doi: [10.1093/pasj/psaa119](https://doi.org/10.1093/pasj/psaa119)
- Yang, B., Stancil, P. C., Balakrishnan, N., & Forrey, R. C. 2010, ApJ, 718, 1062, doi: [10.1088/0004-637X/718/2/1062](https://doi.org/10.1088/0004-637X/718/2/1062)
- Yim, K., Wong, T., Xue, R., et al. 2014, AJ, 148, 127, doi: [10.1088/0004-6256/148/6/127](https://doi.org/10.1088/0004-6256/148/6/127)
- Young, L. M., Meier, D. S., Bureau, M., et al. 2021, ApJ, 909, 98, doi: [10.3847/1538-4357/abe126](https://doi.org/10.3847/1538-4357/abe126)